

# **Children and Young People Committee**

CYP(4)-01-12 Paper 3

## **Inquiry into the implementation of the Learning and Skills (Wales) Measure 2009**

### **Additional evidence from Careers Wales**

#### **Increased collaboration for post 16 delivery**

It is only possible to make an anecdotal response to this question. Across Wales we believe the picture to be mixed. Each Network has a somewhat different approach to the delivery of additional courses and to the funding of them e.g. in some areas, FE and schools will provide some funds from their core funding in addition to the Network funds, but this is not necessarily the position across every Network.

There is little evidence of collaboration with work based learning providers.

#### **Improving skills levels**

Vocational skills – it is too early to make any definitive statement on this . Young people may well be acquiring some new skills but until there is the opportunity to apply these new skills in a work / further learning setting, it is difficult to assess the depth of the knowledge and understanding; i.e. skills need to be practised and applied.

Employability skills – anecdotal evidence from some areas would suggest that young people are increasing their generic skills such as communication, team working etc and also showing increased motivation and confidence.

Impact on learners intending to apply for HE – it would appear that this particular group of learners are slow to mix academic and vocational subjects and tend to stay with the more traditional choices which they and their parents believe are required by HE institutions

#### **Employer support**

We discussed the input provided by employers to support the provision of impartial information and advice. Careers Wales facilitates the involvement of employers in work related learning – for the year 2010-11, employers undertook 17,645 interactions with learners.

#### **Labour market information**

As promised I have included a link and two attachments to LMI held on careerswales.com

<http://beta.careerswales.com/server.php?show=nav.7692&crcl=251&title=Accountant>

Career Search | Your Career | Careers Wales - Windows Internet Explorer

http://beta.careerswales.com/server.php?show=nav.7692&crcl=251&title=Accountant

File Edit View Favorites Tools Help

Home Careers Wales Career Search | Your Career

Contact Us | Site Map | Accessibility Change text size Listen here Cymraeg Select a Site Login Sign up

careerswales.com

Home Your Career Jobs and Training Education and Courses Contact a Careers Adviser

You are here: Home > Your Career > Career Search

### Career Search

I want to be a...

At present you can only search using English job titles. You will be able to search using Welsh job titles soon.  
Need some ideas? [Let us help you get started](#)

#### Leaflets

**Accountancy**

Today's accountants offer much more than just bookkeeping and auditing. They are financial specialists, at the heart of all areas of business. To train as an accountant, you normally need A level or equivalent qualifications; however, in practice, the majority have a degree.

[Read full leaflet](#)  
[See more leaflets](#)

#### Videos

[Audit Manager](#) [Group Financial Controller](#) [Finance Manager](#)

[See more videos](#)

#### Weblinks

- [Association of Accounting Technicians](#)
- [Association of Chartered Certified Accountants](#)

#### Statistics

[Weekly Pay 2004-2010](#)

[By Gender 2004-2010](#)

[By Region 2010 only](#)

[Average Weekly Pay by Age 2010 only](#)

[Number in Occupation by Region 2010 only](#)

#### Average Weekly Pay - Management accountants

Year	Mean Average Pay (£)
2004	665
2005	725
2006	665
2007	705
2008	670
2009	720
2010	755

#### Please note

Please note: All our labour market information is intended as a guide only. We have taken care to present the information as clearly as possible. Our graphs and findings are often based on averages across a range of similar jobs. There could also be variations in areas such as job availability and salaries.

feedback

Internet 100%

Spotlight on Creative Industries | Your Career | Careers Wales - Windows Internet Explorer

http://beta.careerswales.com/server.php?show=nav.9048

File Edit View Favorites Tools Help

Home Your Career Jobs and Training Education and Courses Contact a Careers Adviser

You are here: Home > Your Career > Spotlight on Creative Industries

**Spotlight on Creative Industries**

Creative Industries covers a wide range of sectors and jobs. You could be working in a high tech role in computer games production, interactive media, social network and web development, digital post production in Films and TV, or work in a more traditional creative role in the performing arts, literature or the fine arts.

**Did you know?**

- 1/3 of all Creative jobs in Wales are based in Cardiff.
- 68% of the Welsh creative workforce hold a degree level qualification.
- There are in the region of 3600 businesses in Wales within the creative industries.
- 29% of Creative workers are women.
- By 2017 there will be 7,000 more creative jobs in Wales; half of these will be new jobs due to growth in the industry.

**Tip**

Do your research – a strong understanding of the industry you are interested in will give you the edge over other applicants

**Useful links**

- Performing Arts weblinks
- Design, Arts and Crafts weblinks
- BBC Careers
- SkillSet
- Creative & Cultural Skills
- Prospects

**Find out more**

For more information and advice about working in the Creative Industries:

- Talk to your Careers Adviser
- Use your school or college library

feedback

Career +

- Your account
- Career Search
- Leaflets
- Weblinks
- Videos

Sector Summary

What jobs could I do?

What skills do I need?

Skills in demand

What can I earn?

Where could I work?

Trends

What do I need to do?

Data Sources

Spotlight on Creative Industries | Your Career | Careers Wales - Windows Internet Explorer

http://beta.careerswales.com/server.php?show=nav.9048

File Edit View Favorites Tools Help

Home Your Career **Jobs and Training** Education and Courses Contact a Careers Adviser

You are here: Home > Your Career > Spotlight on Creative Industries

**Spotlight on Creative Industries**

Career +

Your account

Career Search

Leaflets

Weblinks

Videos

**Did you know?**

1/3 of all Creative jobs in Wales are based in Cardiff.

68% of the Welsh creative workforce hold a degree level qualification.

There are in the region of 3600 businesses in Wales within the creative industries.

29% of Creative workers are women.

By 2017 there will be 7,000 more creative jobs in Wales; half of these will be new jobs due to growth in the industry.

**Tip**

Do your research – a strong understanding of the industry you are interested in will give you the edge over other applicants

**Useful links**

Performing Arts weblinks  
 Design, Arts and Crafts weblinks  
 BBC Careers  
 SkillSet  
 Creative & Cultural Skills  
 Prospects

**Find out more**

For more information and advice about working in the Creative Industries:

**Sector Summary**

Creative Industries is probably the most glamorous of sectors but this makes it fiercely competitive. It is also one of the most innovative industries, linked directly to the rapid development of digital technologies and the growth of the internet and online world.

The UK Creative Industry is the largest in Europe and contributes nearly 8% of the UK's economy. The sector is important to Wales; 4% of the total UK creative workforce is employed in Wales.

Creative Industries is a growing sector. It makes up 7.3% of the Welsh economy and is growing twice as fast as the economy as a whole. The Welsh Government has identified the Creative Industries as one of the 6 key sectors that will drive future business growth in Wales.

Creative and Cultural Industries tend to be centred on capital cities. Cardiff dominates the industry in Wales, with 30% of all Welsh Creative jobs based in Cardiff, which is similar to the percentage of English Creative jobs based in London. The development of the BBC Wales 'drama village' in Cardiff Bay will build on the success that national productions like Dr Who have brought to Wales. The village will be completed towards the end of 2011, and in 2012 productions will include Dr Who and Pobol Y Cwm.

The workforce in the Creative Industries is highly skilled and relatively young. Nearly half of all Creative workers are under the age of 35 and 68% hold a degree level qualification.

**What jobs could I do?**

**What skills do I need?**

**Skills in demand**

feedback

## Options Booklet

Please find attached 3 examples. I have others if you require them.

## 14-19 Learning Pathways

Your 14-19 Learning Pathway will consist of one day attendance in the vocational pathway of your choice, either in college or with a training provider, and the remainder of the week in school. The qualifications offered are at entry level and level 1. The courses will start in September 2011.

### Learning Providers

The courses will be by the following Learning Providers:

- **Merthyr Tydfil College**  
Ynysfach, Merthyr Tydfil, CF48 1AR  
Tel: 01685 726010
- **Neighbourhood Learning Centre (NLC)**  
17-20 Pen-y-dre, Gurnos, Merthyr Tydfil CF47 9DY  
Tel: 01685 727072
- **Auto Project**  
Aberfan & Merthyr Vale Youth & Community Project, Delacey Building, Goatmill Rd, Dowlais, Merthyr Tydfil  
Tel: 01685 375535
- **Bedlinog Construction Unit**  
The Old Drift Mine, Trelewis, Treharris, Merthyr Tydfil  
Tel: 01443 710907

### Course and Learning Provider Summary

Course	Entry Level	Level 1		
	NLC	Auto Project	Merthyr College	Bedlinog
Child Care			x	
Hairdressing	x		x	
Motor Vehicle		x	x	
Engineering			x	
Construction	x			x
Outdoor Education Pathway	x			
Retail	x			

## **Information and Taster Day**

To help you decide what course is best for you, your school will arrange for you to attend an Information and Taster Day. Parents and Guardians are also welcome to attend.

- **The Information Day** will take place on **Tuesday 15<sup>th</sup> February 2011** at Merthyr Tydfil College.
- **The Taster Day** will take place on **Thursday 10<sup>th</sup> March 2011** at Merthyr Tydfil College and Neighbourhood Learning Centre; it will be a whole day event, one taster session in the morning and another in the afternoon.

## **Information Day**

The Information Day will give you and your parents/guardians, the opportunity to meet the tutors from all the Learning Providers and ask questions about the course. Careers Advisers will also be available on the day. At the end of the session, you will be given a form to complete. The form will ask you to make a decision on two courses that you are most interested in for a taster experience on the 10<sup>th</sup> March 2011. You will be asked to make a first and second choice.

All completed forms must be handed in to the school before **2<sup>nd</sup> March 2011**.

If you are unable to make a choice, or would like more support to make a decision, please contact your school or Careers Adviser.

## **Taster Day**

The taster session will be planned to provide a practical 'hands on' experience of the course. Protective equipment will be provided, but be prepared to get messy, especially for course such as Construction, Motor Vehicle and Outdoor Education Pathway. Please wear old clothing and suitable footwear, especially for the Outdoor Education Pathway. A buffet lunch will be provided.

## **Application Forms**

Following the Taster Day, you will be asked to fill out an application form.

All application forms must be handed back into school before **25<sup>th</sup> March 2010**.

## **Careers Service**

For further careers advice and guidance contact the school Careers Adviser or your nearest careers office, Careers Wales Mid Glamorgan and Powys, 27 High Street, Merthyr Tydfil  
Tel: 01685 358180.

# 14-19 Learning Pathways Course Information

## CHILD CARE (Merthyr Tydfil College)

### Qualification

The qualification offered is the CACHE Foundation Award, Level 1.

### Course details

It is an introduction to childcare, education and play, providing an opportunity to develop basic skills in caring for children.

### Skills and qualities

To be successful on the programme you will need to show that you enjoy meeting people and working with children, have patience and understanding. You must be a well motivated young person with good behaviour and attendance.

### Method of assessment

You will be assessed through assignments, project work and an end of year exam.

### Progression pathway

On successful completion of the course, you may want to consider:

- CACHE Certificate in Child Care and Education.
- Modern Apprenticeships are also available at NVQ Level 2 and 3

For further information on progression pathways contact your School Careers Adviser or your nearest careers office, Careers Wales Mid Glamorgan and Powys, 27 High Street, Merthyr Tydfil. Tel: 01685 358180

## HAIRDRESSING (Merthyr Tydfil College & NLC)

### Qualification

The qualifications offered are Entry Level BTEC Foundation Learning in Hair & Beauty (NLC) and City & Guilds Level 1 in Salon Services (Merthyr Tydfil College).

### Course details

The course covers the knowledge and understanding of hairdressing and hair care practice, how to use equipment correctly, and safely, and developing customer care skills. Please note: You will not learn the skills of cutting hair on the course. These skills are taught at Level 2 or 3 and onwards.

### Skills and qualities

To be successful on the programme you will need to show that you are able to listen to instructions, enjoy working with your hands, enjoy working in a team and talking to people. You must be a well motivated young person with good behaviour and attendance.

### Method of assessment

You will be assessed through assignments, observations of practical work and on the Level 1 course an end of year exam.

### Progression pathway

On successful completion of the course, you may want to consider:

- NVQ Level 1 or Level 2

For further information on progression pathways contact your School Careers Adviser or your nearest careers office, Careers Wales Mid Glamorgan and Powys, 27 High Street, Merthyr Tydfil. Tel: 01685 358180

## **MOTOR VEHICLE (Merthyr Tydfil College & Autoproject)**

### **Qualification**

The qualification offered is the ABC Level 1 Award in Motor Vehicle Maintenance and Repair.

### **Course details**

The programme is designed to meet the needs of those who wish to acquire the introductory knowledge and skills relevant to motor vehicle repair. Students will learn how to use equipment correctly, and gain basic knowledge and skills in various areas of motor vehicle repair. The overall aim is to provide both experience and knowledge on which to base future career or further education decisions, and to increase employment opportunities. There will be a special focus on health and safety.

### **Skills and qualities**

To be successful on the programme you will need to show that you are able to listen to instructions, enjoy working on your own and in a team, do not mind getting dirty and working in cold conditions. As well as practical sessions in the workshop, the course includes classroom based theory work.

### **Method of assessment**

You will be assessed through assignments and project work.

### **Progression pathway**

On successful completion of the course, you may want to consider:

- NVQ Level 1 or Level 2

For further information on progression pathways contact your School Careers Adviser or your nearest careers office, Careers Wales Mid Glamorgan and Powys, 27 High Street, Merthyr Tydfil. Tel: 01685 358180

## **ENGINEERING (Merthyr Tydfil College)**

### **Qualification**

The qualification offered is the NVQ Level 1 Engineering, Performing Engineering Operators (PEO).

### **Course details**

Students will learn how to use tools correctly, and work with various hard and soft materials, including computer software with a special focus on health and safety. They will construct models from job specifications and drawings.

### **Skills and qualities**

To be successful on the programme you will need to show that you are able to listen to instructions as you will be taught how to use large and small pieces of machinery and tools, enjoy working on your own and in a team, enjoy working with your hands and do not mind getting dirty.

### **Method of assessment**

You will be assessed through assignments and project work.

### **Progression pathway**

On successful completion of the course, you may want to consider:

- NVQ Level 2 in Engineering.

For further information on progression pathways contact your School Careers Adviser or your nearest careers office, Careers Wales Mid Glamorgan and Powys, 27 High Street, Merthyr Tydfil. Tel: 01685 358180



## **CONSTRUCTION (NLC)**

### **Qualification**

The qualification offered is BTEC Entry Level Skills for Working Life in Construction.

### **Course details**

The course covers six units, Health and Safety, Introduction to Painting & Decoration, Introduction to Brickwork, Introduction to Carpentry, Interview Skills and Information Technology.

### **Skills and qualities**

To be successful on the programme you will need to show that you are able to listen to instructions, enjoy working on your own and in a team, do not mind getting dirty and working indoors/outdoor and in cold conditions. You must be a well motivated young person with good behaviour and attendance.

### **The method of assessment**

You will be assessed through practical skills assignments and project work.

### **Progression pathway**

On successful completion of the course, you may want to consider:

- NVQ Level 1 or Level 2 in related trades

For further information on progression pathways contact your School Careers Adviser or your nearest careers office, Careers Wales Mid Glamorgan and Powys, 27 High Street, Merthyr Tydfil

Tel: 01685 358180

## **RETAIL (NLC)**

### **Qualification**

The qualification offered is BTEC Entry Level Skills for Working Life in Retail.

### **Course details**

The course covers six units which include Health and Safety, Introduction to Retail, Working as a Retail Assistant, Interview Skills, Information Technology and Investigating Personal Lifestyles.

### **Skills and qualities**

To be successful on the programme you will need to show that you are able to talk and listen to people, enjoy working in a team and on your own, helping people. You must be a well motivated young person with good behaviour and attendance.

### **Method of assessment**

You will be assessed through practical skills assignments and project work.

### **Progression pathway**

On successful completion of the course, you may want to consider:

- NVQ Level 1
- NVQ Level 2.

For further information on progression pathways contact your School Careers Adviser or your nearest careers office, Careers Wales Mid Glamorgan and Powys, 27 High Street, Merthyr Tydfil

Tel: 01685 358180.

# OUTDOOR EDUCATION PATHWAY (NLC)

## Qualifications

The Outdoor Education Pathway offers the ASDAN Bronze/Silver Award. Alongside the qualification you will also study Key Skills.

## Course details

The course requires the completion of four modules which include; Sport & Leisure, Home Management, The Environment and Health and Survival. There is a focus on personal and skills development that any future employer would welcome.

Activities will include Climbing, Canoeing, kayaking, bush craft and other outdoor related activities, so you have to be prepared to be outdoors in all weathers and temperatures.

## Method of assessment

You will be assessed through observations, practical skills, assignments and project work.

## Progression pathway

On successful completion of the course, you may want to consider:

- Further courses in school, college or work based learning.

For further information on progression pathways contact your School Careers Adviser or your nearest careers office, Careers Wales Mid Glamorgan and Powys, 27 High Street, Merthyr Tydfil

Tel: 01685 358180

## Careers Information

Jayne Tilley of Careers Wales Mid. Glamorgan and Powys, (CWMPG), has very kindly provided additional information to support your decision making.

Please find attached information on the following jobs:

- Teachers Aid
- Care Assistant
- Hairdresser
- Mechanic
- Tyre & Exhaust Fitter
- Garage Worker
- Factory Worker
- Plumber
- Paint & Decorator
- Bricklaying
- Carpenter
- Shop Worker

# Teacher's Aid



## The Work

### What would I do?

- Help children with their work
- Help to set up displays
- Help children to dress
- Help at meal and break times
- May work with just one child with special needs

### Where would I work?

- In a primary or junior school
- In a comprehensive school
- In a special school

### When would I work?

- Work is done during the day - may be full or part time
- School hours are mostly between 8.30am and 4.00pm

## Skills

### What do I need to be able to do?

Work with hands



Work with people



Be patient and friendly



Get on with young people



Some English and maths



## Training



### What will I need to learn?

- The school rules
- What help each child needs
- Ways to help children learn
- How to work closely with other staff

### Where could I learn?

- In college, on a full-time course
- On training - You would spend the week in a school. May sometimes go to a training centre. You would work towards the National Vocational Qualification ((NVQ) at level 1 or 2
- In work. Other staff would show you what to do

## Things to think about

Need to be over 18



May deal with parents



Need to be good at maths and English



May deal with problems, like children being ill



May work with difficult children



May take children to the toilet



## How can I find work?

- Ring your local education office and schools to find out if they want to take anyone on
- Ask in the Job Centres
- Many people go on training or go to college before getting a job

## How can I find out more?

- You can find out more by ringing your local Careers Centre
- If you are in school or college you can ask your teacher or tutor to arrange for you to speak to your careers adviser

# Care Assistant (Elderly)



## The Work

### What would I do?

Bath and dress people  
Feed people  
Take people to the toilet  
Clean and tidy  
Talk to people  
Shopping and housework

### Where would I work?

Old people's home  
Nursing home  
In someone's house  
Day Centre

### When would I work?

Days  
Evenings  
Weekends  
Most people have to work shifts

## Skills

### What do I need to be able to do?

Be friendly and talk to people



Be calm and patient



Be honest



Listen to people



## Training

### What will I need to learn?

How to bath people  
How to lift people  
How to make beds  
How to care for old people

### Where could I learn?

In college, on a full-time course  
On training in a nursing home or day centre. You may be there all week or you may spend one day a week in college. You would work towards a National Vocational Qualification (NVQ) at level 1 or 2

## Things to think about

Need to be over 18 to have a job, but can train at 16



May spend a lot of time cleaning and tidying up



May need to work shifts



May need to lift people



May have to work with people who are ill or dying



May need to drive and work in a lot of places



## How can I find work?

Most people go to college or on training before getting a job

Most places won't give you a job until you are over 18. Lots of places want you to have a qualification or to have experience

## How can I find out more?

You can find out more by ringing your local Careers Centre

If you are in school or college you can ask your teacher or tutor to arrange for you to speak to your careers adviser



KEB

Care Assistant  
(Elderly)

# Hairstresser



## The Work

### What would I do?

- Wash hair
- Cut and style hair
- Perm hair
- Put highlights in hair
- Make appointments
- Use the till

### Where would I work?

- In a salon
- In someone's house
- On a cruise ship

### When would I work?

- During the day, for 5 days a week  
This will include a Saturday
- Evenings - most salons stay open late one night per week

## Skills

### What do I need to be able to do?

Work with your hands



Talk to people



Listen to people



Be careful



Make things look good



## Training



### What will I need to learn?

- How to cut and style hair
- How to perm hair and put in highlights
- How to use clippers and scissors

### Where could I learn?

- In college, on a full-time course
- On training in a salon. You would work towards the National Vocational Qualification (NVQ) at level 1 or 2
- If you were working towards level 2 you might need to spend time in college or in a training centre

## Things to think about

May be standing for most of the day

Will be using chemicals

Will be hard to find work on a cruise ship



May spend a lot of time at the start:  
Using the phone

Making tea

Sweeping up



## How can I find work?

- Look for adverts in salon windows
- Call in to salons to ask if they want staff
- Ask in the Careers Centre and Job Centre
- Look in the local newspapers

## How can I find out more?

- You can find out more by ringing your local Careers Centre
- If you are in school or college you can ask your teacher or tutor to arrange for you to speak to your careers adviser

# Tyre & Exhaust Fitter



## The Work

### What would I do?

- Mend punctures in tyres
- Take off wheels
- Balance wheels
- Replace tyres
- Fit new exhausts

### Where would I work?

- In a garage
- On the side of the road

### When would I work?

- Work is mostly done during the day
- A lot of garages are open on Saturdays

## Skills

### What do I need to be able to do?

Work with your hands



Talk to people



Lift heavy objects



Follow rules and work safely



## Training

### What will I need to learn?

- How to use tools and machines
- What tyres each car needs
- When tyres need to be changed
- How to fit exhausts

### Where could I learn?

- In a garage you would work with other staff who would show you what to do
- You would work towards the National Vocational Qualification (NVQ) at level 1 or 2
- You may need to go to college for one day a week

## Things to think about

May have to stand for a lot of the day



Will work with oil and grease



May need to lie down under cars



May have to deal with money and answer the telephone



It can be cold in a garage



May need to learn to drive



## How can I find work?

Most people go into this type of work through training

You could ask local garages if they want to take anyone on training

## How can I find out more?

You can find out more by ringing your local Careers Centre

If you are in school or college you can ask your teacher or tutor to arrange for you to speak to your careers adviser

# Garage Worker



## The Work

### What would I do?

You could be a:

**Mechanic** - working on all parts of the car but mainly the engine

**Vehicle Body Repairer** - fixing body work of the car

**Tyre and Exhaust Fitter** - changing tyres and exhausts

You could also work with bikes, lorries or buses

### Where would I work?

In a garage

In a car dealer's

On the roadside

### When would I work?

Work is mainly done in the day

Evenings - sometimes

Weekends - lots of garages open on Saturdays

## Skills

### What do I need to be able to do?

Work with your hands



Work with people



Lift heavy objects



Follow rules



Be careful in work



## Training

### What will I need to learn?

How cars work

What each part of the car is called and what it does

How to use tools and machines

How to change or repair parts

### Where could I learn?

In college, on a full-time course

On training, working in a garage all week. You would work towards the National Vocational Qualification (NVQ) level 1

You could go on to level 2. You would spend some time in a garage and some time in college

## Things to think about

May spend a lot of time standing or lying under cars



Will need to use tools



Could be working with oil, grease and paint



May have to deal with money



Will need to wear overalls



May need to learn to drive



Will need to talk to customers



## How can I find work?

Most people go to college or on training before getting a job

You could ask your local garages if they want to take anyone on training

## How can I find out more?

You can find out more by ringing your local Careers Centre

If you are in school or college you can ask your teacher or tutor to arrange for you to speak to your careers adviser

# Factory Worker



## The Work

### What would I do?

There are lots of jobs you can do in a factory. You could:

- Fit things together
- Work on a production line
- Use machines or hand tools
- Pack goods
- Test goods to check for faults
- Make and label boxes
- Weigh or measure goods

### Where would I work?

In a factory - large or small

### When would I work?

Work is mostly done in the day  
 Evenings - sometimes  
 Nights - sometimes  
 May have to work shifts

## Skills

### What do I need to be able to do?

Work with your hands



Follow rules



Work with people



Maths - count and measure



Work quickly And safely



## Training



### What will I need to learn?

- How to use machines
- How to use hand tools
- How to work safely

### Where could I learn?

On training. You would be based in a factory for the week

You would work towards the National Vocational Qualification (NVQ) at level 1 or 2

Working in a factory. You would be shown what to do by other staff

## Things to think about

May need to stand all day



May have to lift heavy goods



May do the same thing all day



May have to work shifts



Would work inside all day



Will need to work quickly



## How can I find work?

- Contact factories to see if they want to take anyone on
- Ads in the Careers Centre and Job Centre
- Look in the local newspapers
- Sign on with recruitment agencies

## How can I find out more?

You can find out more by ringing your local Careers Centre

If you are in school or college you can ask your teacher or tutor to arrange for you to speak to your careers adviser



SAB

Factory Worker



# Plumber



## The Work

### What would I do?

Fit or mend: sink units  
toilets and baths  
radiators and boilers  
washing machines

Make sure that roofs don't let water in

Fit pipes and gutters

Fix leaks in pipes and taps

### Where would I work?

On a building site

At a house - outside and inside

In an office or shop

In any place of work

### When would I work?

Work is mostly done in the day

Evenings - sometimes

Weekends - sometimes

## Skills

### What do I need to be able to do?

Work with  
your hands



Talk to  
people



Carry heavy  
objects



Maths -  
count and  
measure



Follow  
rules



## Training



### What will I need to learn?

Use of hand tools like drills and saws

How to read drawings and plans

How electrical and heating systems work

Welding

What pipes are made of, like copper,  
plastic or cast iron, and when to use  
them

### Where will I learn?

In college - on a full-time course

On training - often four days a week  
with a plumber and one day in college  
working towards the National Vocational  
Qualification (NVQ) at level 2. This is  
called a National Traineeship

## Things to think about

May have to climb ladders or work  
in small spaces



May have to travel to a lot of  
places to work



May have to work weekends or eve-  
nings and may be on call



Would need to go to college



Would work towards the NVQ at  
level 2



May need to have some GCSEs to  
get on to a National Traineeship

May need to learn to drive



## How can I find work?

Most people go into plumbing after  
going on training or taking a college  
course

You could ask plumbers if they want to  
take anyone on training

## How can I find out more?

You can find out more from your local  
Careers Centre

If you are in school or college you can  
ask your teacher or tutor to arrange for  
you to see a careers adviser

# Painter & Decorator



## The Work

### What would I do?

Get walls and doors ready to be painted or papered  
 Hang wallpaper  
 Paint the inside and outside of: houses, offices, shops and other buildings, bridges and ships  
 Clean up

### Where would I work?

Building sites  
 Houses - inside and outside  
 Shops, offices or other buildings

### When would I work?

Work is mainly done in the day  
 Evenings - sometimes  
 Weekends - sometimes

## Skills

### What do I need to be able to do?

Work with your hands



Work with people



Work quickly but carefully



Maths - count and measure



Take extra care with detail



## Training



### What will I need to learn?

How to prepare walls and doors  
 What types of paint there are and when to use them  
 How to get paint effects  
 How to cut and hang wallpaper

### Where could I learn?

In college, on a full-time course  
 On training, working with a painter all week. You would work towards the National Vocational Qualification (NVQ) level 1  
 You could go on to level 2. You would spend some time with a painter and some time in college

## Things to think about

May need to work at heights



Will have to clean up after each job



Will need to spend time rubbing down doors and walls



May have to travel to lots of places to work



Paint can give off fumes



## How can I find work?

Most people go to college or on training before getting a job

You could look in the newspapers or contact local painters to ask if they are taking anyone on

## How can I find out more?

You can find out more by ringing your local Careers Centre

If you are in school or college you can ask your teacher or tutor to arrange for you to speak to your careers adviser

# Bricklayer



## The Work

### What would I do?

- Build or repair walls
- Build arches and tunnels
- Fit or repair chimneys
- Prepare the ground for building
- Mix cement

### Where would I work?

- On a building site
- In a house or garden
- In towns, cities or in the country

### When would I work?

- Work is mostly done in the day
- Evenings - to meet deadlines
- Weekends - to meet deadlines

## Skills

### What do I need to be able to do?

Work with your hands



Work as part of a team



Carry heavy objects



Maths - count and measure



Follow rules and work safely



## Training

### What will I need to learn?

- How to use tools
- How to set out bricks
- How to cut and lay bricks and blocks
- How to put up scaffolding
- How drainage systems work

### Where could I learn?

- In college, on a full-time course
- On training, working with a builder all week. You would work towards the National Vocational Qualification (NVQ) level 1
- You could go on to level 2. You would spend some time with a builder and some time in college

## Things to think about

Will need to work at heights



Will need to wear safety gear



Will need to work in all sorts of weather



Will work in dusty and dirty places



May start early, finish late or work on weekends



May have to travel to lots of places to work



Will work with cement - this may affect your skin



## How can I find work?

Most people go to college or on training before getting a job

Most building sites prefer to take people who are over 18

## How can I find out more?

You can find out more by ringing your local Careers Centre

If you are in school or college you can ask your teacher or tutor to arrange for you to speak to your careers adviser



UF

**Bricklayer**

# Carpenter



## The Work

### What would I do?

Cut and shape wood to make units for kitchens and bedrooms

Hang doors and fit window frames

Fit stairs and lay floorboards

Put up roof timbers

### Where would I work?

On a building site

In a house or shop

In a workshop

### When would I work?

Work is mainly done in the day

Evenings - sometimes

Weekends - sometimes

## Skills

### What do I need to be able to do?

Work with your hands



Work with people



Carry heavy objects



Maths - count and measure



Follow rules and work safely



## Training

### What will I need to learn?

How to use tools like saws and drills

What wood to use for each job

How to hang doors, fit window frames, fit stairs and lay floorboards

How to put up roof timbers

### Where could I learn?

In college, on a full-time course

On training, working with a carpenter all week. You would work towards the National Vocational Qualification (NVQ) level 1

You could go on to level 2. You would spend some time with a carpenter and some time in college

## Things to think about

May need to work at heights



Will need to wear safety gear



May work inside or outside



Will work in dusty places



May start early, finish late or work on weekends



May have to travel to lots of places to work



## How can I find work?

Most people go to college or on training before getting a job

You could ask local carpenters if they are looking to take anyone on training

## How can I find out more?

You can find out more by ringing your local Careers Centre

If you are in school or college you can ask your teacher or tutor to arrange for you to speak to your careers adviser

# Shop Worker



## The Work

### What would I do?

- Help customers to find goods
- Put goods out on shelves or racks
- Put prices on goods
- Keep the shop tidy
- May use the till
- May help people to decide what to buy

### Where would I work?

- In supermarkets
- In small or large shops

### When would I work?

- Many shops are now open all week. You would work 5 days and may have to work on Saturday or Sunday
- A lot of shops stay open late. Lots of people do part-time work

## Skills

### What do I need to be able to do?

Be helpful and calm



Work as part of a team



Talk and listen to people



Lift and carry heavy things



Maths - count and use money



## Training



### What will I need to learn?

- How to use a till
- How to put goods on display and make them look nice
- How to price goods
- How to deal with customers

### Where could I learn?

- On training in a shop. You would work towards a qualification called the National Vocational Qualification (NVQ) at level 1 or 2
- Working in a shop. You would be shown what to do by other staff

## Things to think about

May have to work late or on weekends



May have to talk to customers who are rude to you



May be standing for most of the day



May have to wear a uniform



May have to dust shelves



## How can I find work?

- Look for adverts in shop windows
- Call in to shops to ask if they are looking for staff
- Ask in the Careers Centre and Job Centres
- Look in the local newspapers

## How can I find out more?

- You can find out more by ringing your local Careers Centre
- If you are in school or college you can ask your teacher or tutor to arrange for you to speak to your careers adviser

## **For further information**

### **Careers Service**

For further careers advice and guidance contact the school Careers Adviser or your nearest careers office, Careers Wales Mid Glamorgan and Powys, 27 High Street, Merthyr Tydfil  
Tel: 01685 358180.

### **Schools**

**Ian Llewellyn, Vocational Co-ordinator**, Afon Taf High School. Tel: 01443 690401

**John Davies, Vocational Co-ordinator**, Pen-y-dre High School, Tel: 01685 721726

**Bev Davies, Vocational Co-ordinator**, Cyfarthfa High School, Tel: 01685 721725

**Glenys Jones, Vocational Co-ordinator**, Bishop Hedley High School, Tel: 01685 721747

### **14-19 Network**

**Lauren Penny, Network Support Officer**

Merthyr Tydfil 14-19 Network

MTCBC

Ty Keir Hardie

Riverside Court

Avenue De Clinchy

Merthyr Tydfil

CF47 8XE

Tel: 01685 727314

### **Brochure Format**

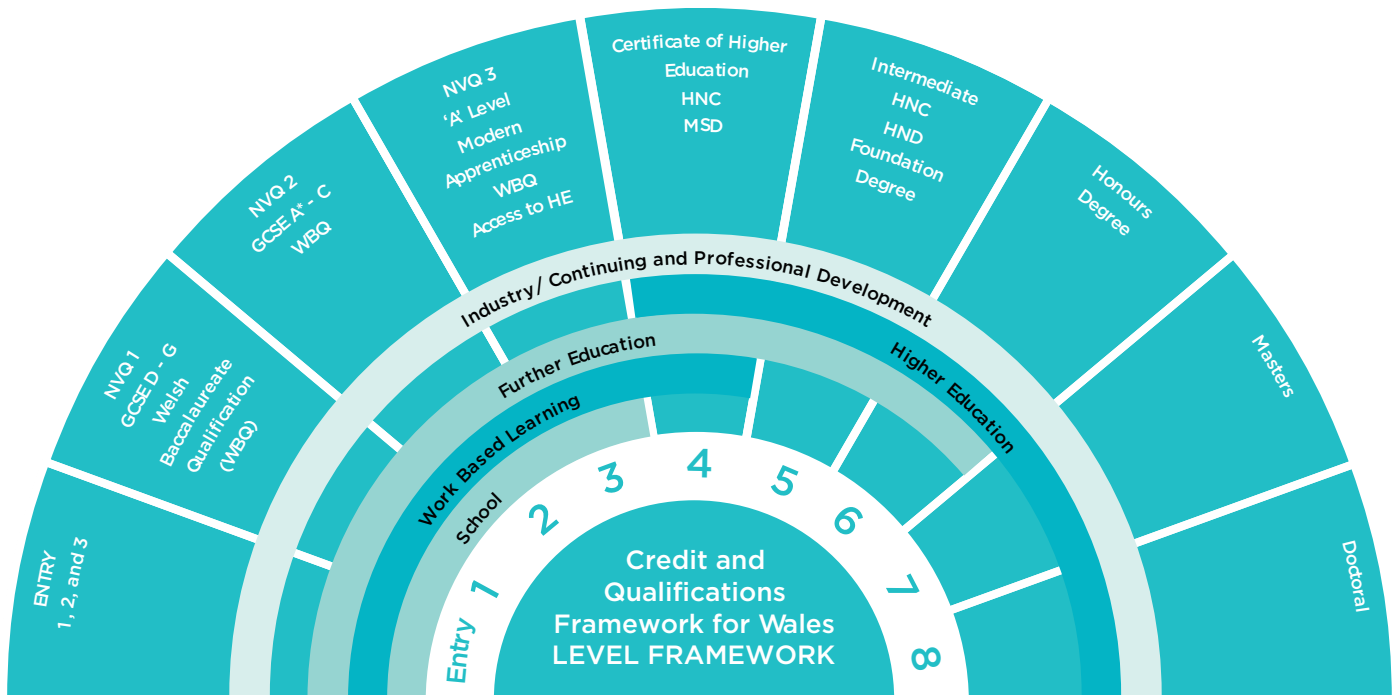
If you require this brochure in another format, please contact:

**Lauren Penny, Network Support Officer** Tel: 01685 727314

# POWYS PROSPECTUS 2011-12



## CREDIT AND QUALIFICATIONS FRAMEWORK FOR WALES LEARNING AND PROGRESSION ROUTES



The Credit and Qualifications Framework for Wales was introduced in 2003 as a fully inclusive learning framework. The Levels capture all learning from the very initial stages (Entry) to the most advanced (Level 8). The Fan diagram illustrates the levels and examples of qualifications and learning provision that are included in it.

For further details contact the CQFW Secretariat:  
 Tel: 01443 663 663 Fax: 01443 663 653  
 E-mail: [info@cqfw.net](mailto:info@cqfw.net) Visit: [www.cqfw.net](http://www.cqfw.net)

Cyngor Cyllido Addysg  
 Uwch Cymru  
 Higher Education Funding  
 Council for Wales



### DISCLAIMER

The details of schools and options published in this prospectus were accurate at the time of going to print. However, 14-19 Learning Pathways and all institutions involved reserve the right to make any changes deemed necessary. Please be sure to check any details with the relevant partner institutions.





Rhwychwaith Powys  
14 - 19  
Powys Network

POWYS  
16+  
PROSPECTUS  
2011-12

# 14-19 LEARNING PATHWAYS

“TO HELP ALL YOUNG PEOPLE IN POWYS REACH THEIR POTENTIAL BY INCREASING THE CHOICE, FLEXIBILITY AND QUALITY OF LEARNING AND SUPPORT AVAILABLE”.

Provision is made under the 6 key themes of:

- **INDIVIDUAL LEARNING PATHWAY**
- **WIDER CHOICE AND FLEXIBILITY**
- **THE LEARNING CORE**
- **LEARNING COACH**
- **PERSONAL SUPPORT**
- **CAREERS ADVICE AND GUIDANCE**

We are delighted that learners in Powys already have a wider choice of courses from a growing range of options known as the local curricula and our Curriculum Working Group is working towards greater collaboration between learning providers, aiming to make a difference for learners in Powys wherever they live.

All 14 to 19 year olds in Wales are entitled to follow their own individually planned learning pathway and to be supported to do so. In Powys our policy is to provide learning coach support for all 14-19 year olds by 2012 and through

the work of our Support Working Group to identify a minimum level of personal support available for all young people (when needed) through information, advice and guidance services.

## LOCAL CURRICULA CHOICES

Powys Local Curricula Powys is currently has two main areas of local curricula “North” and “South”. The Powys Local Curricula contains a range of courses, from Pre-Entry/Entry to Level 4, from which young people can choose the formal aspects of their learning pathways. The Welsh Assembly Government has identified curriculum areas known as Domains to help identify the choices available. These Domains are;

- **MATHEMATICS, SCIENCE AND ASPECTS OF TECHNOLOGY**
- **BUSINESS AND MANAGEMENT**
- **SERVICES TO PEOPLE**
- **CREATIVE ARTS AND CULTURE**
- **HUMANITIES AND LANGUAGES**

## WIDER CHOICE AND FLEXIBILITY

Under the key theme of Individual Learning Pathways, learning providers, both individually and collaboratively, should be making a wider range of subject choices available to 14-19 year old learners.

These choices include general qualifications as well as those which have a vocational flavour.

For September 2011 learners at Key Stage 4 will have a choice of 28 subjects and at Key Stage 5 (post 16) 30 subjects at Level 3.

**For further details of the 14-19 pathways in Powys please contact:**

**Nici Jones 14-19 Pathways  
Manager Powys County  
Council 01597 826703  
nici.jones@powys.gov.uk**

# UCAS POINTS

GCE QUALIFICATIONS		BTEC NATIONALS			POINTS
A LEVEL	SUBSIDIARY DIPLOMA	DIPLOMA	EXTENDED DIPLOMA	WELSH BACCALAUREATE	
				DDD	360
				DDM	320
				DMM	280
			DD	MMM	240
					220
			DM	MMP	200
					180
			MM	MPP	160
A*					140
A	D	MP	PPP	PASS	120
					110
B					100
					90
C	M	PP			80
					77
					72
					71
					64
					60
D					58
					52
					50
					45
E	P				40
					30
					20

# CAREERS ADVICE AND GUIDANCE

**CAREERS WALES PROVIDES FREE CAREERS ADVICE, GUIDANCE AND INFORMATION FOR PEOPLE OF ALL AGES. IN POWYS THIS SERVICE IS PROVIDED BY CAREERS WALES MID GLAMORGAN AND POWYS.**

**ALL HIGH SCHOOLS AND THE MAIN COLEG POWYS SITES HAVE A CAREERS ADVISER WHO CAN HELP STUDENTS WITH THEIR PLANS FOR THE FUTURE.**

## DURING YEAR 11

You will have the opportunity to talk to a Careers Adviser about what you plan to do after Year 11. The Careers Adviser can:

- show you how to find out about careers you are interested in and the qualifications you might need
- help you to find out about courses in the sixth form and at college
- give you information about job and training vacancies
- provide advice about filling in application forms, putting a CV together or preparing for interviews

Careers Advisers also give talks to classes or year groups on career related topics and we work with your school to organise activities like work experience and industry days that help you to find out about the world of work.

Extra help is available for students who need additional support.

## AFTER YEAR 11

- If you decide to stay on at school or go to college you will be able to see the school or college Careers Adviser when you need to discuss your plans or ideas.
- If you leave school or college to look for work or training you can see a Careers Adviser at the local Careers Centre (see contact details below).



**careerswales.com**  
Careers information and advice

Use our website to:

- find information on a wide range of careers and jobs
- update your Learning Pathway plan
- find out more about choices after Year 11
- look at job and training vacancies
- find out about university courses and how to apply

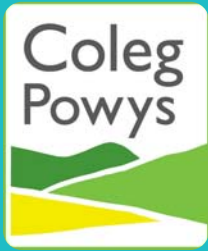
## SERVICES FOR PARENTS

- Careers Advisers are also available at school parents' evenings to talk to students and their parents or carers.
- Careerswales.com has a separate parent section which provides advice about how to support your son or daughter in making decisions about their future plans.

## HOW TO CONTACT US

We have Careers Centres in Brecon (01874 624619), Newtown (01686 626959) and Llandrindod Wells (01597 825898). Students or parents who would like to speak to a Careers Adviser outside school or college hours are welcome to drop in or phone to make an appointment.





# COLEG POWYS

## ACHIEVING EXCELLENCE IN

**COLEG POWYS IS A UNIQUE FURTHER EDUCATION COLLEGE DEDICATED TO THE PURSUIT OF EXCELLENCE. IT HAS A NUMBER OF CAMPUSES, EACH NESTLING IN THE IDYLIC LANDSCAPE OF RURAL MID WALES. COLEG POWYS IS A DRIVEN ENERGETIC ORGANISATION COMMITTED TO PROVIDING THE HIGHEST QUALITY INNOVATIVE TEACHING AND LEARNING FOR ALL ITS CLIENTS.**



Coleg Powys has been central to the development of a vocational curriculum for learners aged between 14 and 19 for some years. We have worked tirelessly with partner schools to ensure that young people can have an experience that goes beyond the traditional academic subjects. As a consequence, many young learners have achieved outstanding successes in subjects like Construction, Motor Vehicle and Hair and Beauty. Programmes allow learners to start at the level best matched to their current skills and knowledge, and provide excellent progression opportunities onto courses at the next level, onto university or into employment. Many level 3 programmes attract UCAS points equivalent to 3 or 4 A levels. Coleg Powys also offers higher education qualifications, including post graduate qualifications, honours degrees and foundation degrees. Coleg Powys offers a range of exciting full-time vocational programmes of one or two

years' duration. The College provides individually tailored programmes at entry level, and a wide range of Awards, Certificates and Diplomas at levels 1, 2 and 3. These qualifications are part of the new Credit and Qualifications Framework which provides a record of achievement for each part of a student's programme. All full time learners receive full pastoral support to ensure that they receive everything that they require to have a successful and enjoyable time at the college. We are incredibly proud of the achievements of



# YS: ALL WE DO

**POWYS**  
**16+**  
PROSPECTUS  
2011-12



our learners. Last year, 35 learners achieved triple distinctions (equivalent to 3 A Level grade As), 256 learners went on to pursue degrees and they achieved a successful completion rate of 81%, making Coleg Powys one of the most successful colleges in Wales. We are delighted to be part of the Powys 14 to 19 Network and we hope that you find the subjects that we are contributing exciting, attractive and inspiring.

Coleg Powys Brecon  
Student Services

**ADDRESS:** Penlan, Brecon,  
Powys LD3 9SR

**T:** 0845 4086 400

Coleg Powys Newtown -  
Student Services

**ADDRESS:** Llanidloes Road,  
Newtown, Powys SY16 4HU

**T:** 0845 4086 200

**E:** [enquiries@coleg-powys.ac.uk](mailto:enquiries@coleg-powys.ac.uk)

**[www.coleg-powys.ac.uk](http://www.coleg-powys.ac.uk)**



# POWYS TRAINING



POWYS TRAINING HAS BEEN SPECIALISING IN WORK EXPERIENCE AND APPRENTICESHIPS FOR MORE THAN 20 YEARS.

A TEAM OF DEDICATED STAFF LOCATED IN BRECON, LLANDRINDOD WELLS, NEWTOWN, MACHYNLLETH WELSHPOOL AND YSTRADGYNLAIS IS AVAILABLE TO DISCUSS YOUR LEARNING NEEDS AND JOB OPPORTUNITIES. WE CAN TALK YOU THROUGH THE BENEFITS OF WORK-BASED LEARNING AND APPRENTICESHIPS, INCLUDING THE OPTION TO EARN WHILE YOU ARE LEARNING.

FOR MORE INFORMATION, PLEASE CONTACT US ON FREEPHONE: 0800 328 0881 OR ONLINE AT [WWW.POWYS-TRAINING.CO.UK](http://WWW.POWYS-TRAINING.CO.UK)



## WHAT ARE APPRENTICESHIPS?

Anyone who is over 16, living in Wales and not in full time education can apply for an Apprenticeship. There are Apprenticeships to suit your interests and experience, so why not see if there is one out there for you! Visit the Apprenticeship Matching Service on [www.careerswales.com](http://www.careerswales.com)

Employers all over the country recognise and value Apprenticeships as they show that you have been trained in the skills they need.

You can earn while you learn: As an Apprentice you will do a real job for a real employer, so you will receive a regular wage from day one while

undertaking off-the-job training with your chosen training provider.

The childcare sector is a major employer within Wales, and therefore needs to ensure that workers in that sector are fully trained and qualified. The aim of this apprenticeship is to ensure that you have the essential skills and knowledge to care for children. Charlotte is a positive example of how work based learning can set you on the road to a fulfilling career. Charlotte gained valuable work experience at a local primary school and as a direct result of this she was offered an apprenticeship. Charlotte has achieved her level 2 award and is on the final stages of her level 3, including being employed as a teaching assistant and working at an after school club.

## WORK BASED LEARNING

Work based learning offers work experience placements to young people not in employment to improve their job skills and prospects. One such opportunity was offered to Michael, who joined the construction team at the new

school build at Ysgol Trefonnen in Llandrindod Wells. During his time with the building contractor, Michael had hands-on experience learning a variety of building skills including plastering, rendering and dry-lining. The practical experience Michael gained will help his job prospects, with the possibility of him staying on with the building contractor for other jobs and becoming an apprentice. Aprille Saunders, General Manager of Powys Training, said: "Work experience is a vital tool in furthering the skills of young people and helping them to secure future employment."

Work based learning is part-financed by the European Social Fund through the Welsh Assembly Government.



# SOUTH POWYS TIMETABLE MODEL

MON	TUES	WEDS	THURS	FRI
OPTION A	OPTION D	OPTION C	OPTION E	OPTION B
OPTION B	OPTION E	OPTION A	OPTION D	OPTION C

# SOUTH POWYS SUBJECTS

KEY
Brec = Brecon
BU = Builth Wells
CP = Coleg Powys
CR = Crickhowell
G = Gwernyfed
LIHS = Llandrindod
M = Maesydderwen

BLOCK A	BLOCK B	BLOCK C	BLOCK D	BLOCK E
English (G) Chemistry (G) ICT (G)	Physics (G) Media Studies (G) Geography (G)	Sociology (G) Art (G)	Maths (G) History (G)	Biology (G) Business (G)
Product Design (M) Chemistry (M) English (M)	Biology (M) Welsh (M) IT (M)	Art (M) Geography (M)	Maths (M) Media Studies (M)	History (M) Physics (M)
Art (LIHS) English (LIHS) Health & Social (LIHS) Maths (LIHS)	Biology (LIHS) PE (LIHS) Physics (LIHS)	Chemistry (LIHS) Design & Technology (LIHS) French (LIHS)	Business (LIHS) Electronics (LIHS) History (LIHS)	Drama (LIHS) Geography (LIHS) Computer Studies (LIHS) Welsh (LIHS)
Bioleg (BU) English (BU) Further Maths (BU)	French (BU) Maths (BU) RE (BU)	Daearyddiaeth (BU) Chemistry (BU) Design & Technology / Textiles (BU) History (BU)	Hanes (BU) Biology (BU) Hospitality BTEC L3 (BU) Geography (BU)	Art (BU) German (BU) Physics (BU) Music (BU) Cymraeg (BU)
Music Technology L3 BTEC (Brec) French (Brec) Geography (Brec)	Business (Brec) Technology/Product Design (Brec) Chemistry (Brec)	Biology (Brec) History (Brec) Welsh 1st (Brec) Welsh 2nd (Brec)	English (Brec) Art (Br) Physics (Br)	Maths (Brec) RE (Brec) Drama (Brec)
Chemistry (CR) Performing Arts (CR) Law (CR) Psychology (CR)	French (CR) Further Maths (CR) PE (CR) RE (CR) Music (CR)	Art (Cr) Biology (CR) Design & Technology (CR) ICT (CR)	Business (CR) Maths (CR) History (CR)	English (CR) Physics (CR) Geography (CR) Health & Social (CR)
	Childcare L3 BTEC (CP) Public Services L3 BTEC (CP)		Performing Arts BTEC L3 (CP) AAT Accounting (CP) Psychology (CP)	I.T. BTEC L3 (CP) Health & Social Care BTEC L3 (CP) Sport Science BTEC L3 (CP)



# SOUTH POWYS SCHOOLS BRECON HIGH

**BRECON HIGH SCHOOL IS A KS3-5 (11-18) COMPREHENSIVE SCHOOL LOCATED IN BRECON. WE ARE PROUD TO BE A COMMUNITY SCHOOL WHICH SERVES THE TOWN ITSELF AS WELL AS A LARGE RURAL SURROUNDING AREA.**

**OUR VISION IS TO ENSURE THAT EVERYONE AT BRECON HIGH SCHOOL CAN AND WILL SUCCEED.**



Our aims are:

- To improve teaching and learning
- To raise expectations of everybody in the school
- To raise standards at all Key Stages

We actively promote bilingualism throughout the school and all of our students study and are accredited in Welsh at the end of Key Stage 4. In addition, in Key Stage 5 we offer the opportunity for all students to study Welsh 1st and 2nd Language at both AS and A2 Level.

All Year 12 and 13 students have full access to ICT facilities in a new large dedicated 6th Form study centre and can choose from a broad range of level 3 qualifications including AS, A2 and Level 3 BTEC courses.







# H SCHOOL

Since September 2009 all Y12 students have studied The Welsh Baccalaureate at Advanced Level (Level 3). Students complete core activities such as Wales Europe and the World, Community projects and Team Enterprise projects.

KS5 students are lucky enough to have easy local access to courses run at Coleg Powys's Brecon Campus, which is within walking distance of the school. All students have access to a wide range of vocational level 3 courses which carry the same weighting as AS and A2 qualifications. Many students study these vocational courses alongside their traditional academic qualifications.

A new vocational qualification in Music Technology will also be available on the school campus and will be delivered in a brand

new state of the art Music Technology/Media Studies suite in September 2011.

The school has an excellent academic reputation and in addition to its academic record the school has a strong tradition of musical and sporting success. The school gains considerable success at International and County level in all sports.

The school is set in some 35 acres of grounds. The sports fields include an eight lane international standard tartan running track. A £5m sports centre, which includes a swimming pool, is on the site. The school has part use of these facilities throughout the week.



6th form students at Brecon High School have access to wide range of extra curricular activities, including sporting, musical and cultural activities. Post 16 students are encouraged to take on leading roles within the school and are seen as positive role models by all lower school students and the community at large.

In the school's most recent inspection report, ESTYN stated that "Brecon High School is a good school with many outstanding features".

**HEAD OF SIXTH FORM:** Mrs S. Boshier  
**ADDRESS:** Penlan, Brecon, Powys LD3 9SR  
**T:** 01874 622361 **E:** office@brecon-hs.powys.sch.uk  
**www.brecon-hs.powys.sch.uk**



# SOUTH POWYS SCHOOLS BUILT WELLS HIGH SCHOOL

BUILT WELLS HIGH SCHOOL IS A THRIVING, BILINGUAL, 11-18 COMPREHENSIVE, SITUATED ON AN EXCEPTIONAL SITE ON THE BANKS OF THE RIVER WYE.

IN 2010, THE INSPECTORATE FOR EDUCATION AND TRAINING IN WALES (ESTYN) IN THEIR REPORT ON BWHS SAID:

“BUILT CONSISTENTLY PROMOTES AND ACHIEVES HIGH STANDARDS IN ACADEMIC, PASTORAL AND EXTRA-CURRICULAR ACTIVITIES AND BECAUSE OF ITS VERY MANY SIGNIFICANT STRENGTHS, JUSTIFIABLY ENJOYS THE TOTAL CONFIDENCE OF ITS COMMUNITY.”

ESTYN

BWHS has a unique atmosphere. Many visitors comment on the special ambience that they feel as soon as they enter the school. As a truly bilingual school, we appreciate our community and our learners benefit from the close access to the town's facilities.

As a School community, we are committed to enhancing our bilingual ethos, enjoying the extensive facilities and our impressive new building (Bwyty). The Bwyty houses state of the art music facilities, art rooms, an IT suite and yr Adran Gymraeg - a suite of rooms dedicated to Welsh-medium teaching. Our investment in ICT across the school enables all our learners to access the best, modern opportunities in order to

compete globally.

Built Wells High School has outstanding international links: three schools in three separate states in the USA, Australia, Italy, Greece, Sweden, Madagascar, Patagonia, France and Germany makes us a very well sought after centre for international learning. Work related learning underpins our International Learning



Programme where students participate in a cultural exchange programme, gaining work experience in business and industry as integral components of the Language Module and Working with an Employer elements of the Welsh Bacalaureate Qualification.

At Built Wells High School we pride ourselves in promoting our inclusive ethos, devoting time to nurture your talents and cater for all types of needs. Encouragement, support and intervention to augment learning are central to the working processes of the school and we endeavour to lay the foundations for your future.

We fervently believe in listening to our stakeholders, considering all opinions and making decisions to benefit all learners at all stages of their learning; these are the fundamental principles that make our school a highly respected educational provider.

Our excellent support for each learner influences the way our young people behave. We insist on excellent behaviour at all times and foster respect in everything we do. We expect all of our pupils to

# S



reflect the core values of the school, especially when they are away from the school community and our pupils have been commended on several occasions for their courtesy and politeness from various members of the public.

The future of BWHS as a Learning provider is bright, progressive and exciting. Choices in both Languages are extensive and promote lifelong learning in a safe, rural environment with easy transport links to the South and the North.

**HEAD OF SIXTH FORM:**  
Mrs Elin Non Ennis

**ADDRESS:**  
College Road, Builth Wells,  
Powys LD2 3BW

**T:** 01982 553292

**E:** office@builth-hs.  
powys.sch.uk

**www.builth-hs.powys.sch.uk**

**POWYS**  
**16+**  
**PROSPECTUS**  
2011-12





# SOUTH POWYS SCHOOLS CRICKHOWELL

CRICKHOWELL HIGH SCHOOL IS A PURPOSE BUILT COMMUNITY FOCUSED SCHOOL OF SOME 750 STUDENTS. THE SCHOOL IS LOCATED IN THE TOWN OF CRICKHOWELL, WITHIN THE BEAUTIFUL AND INSPIRING SURROUNDINGS OF THE BRECON BEACONS NATIONAL PARK.



Crickhowell is consistently recognised as a high achieving school with a record of academic excellence. The School is constantly developing a broader range of courses, activities, opportunities and resources to meet the needs of the community in the 21st Century.

Our target is for all students to achieve at least five A\* - C grades at GCSE, or the equivalent, by the end of Key Stage 4. Most of our students stay on in the Sixth Form and go on to achieve excellent results post 16.

We offer a wide choice of academic and vocational opportunities for all our students, delivered by a specialist team of highly qualified and dedicated staff. We also offer access to part time college courses. We work positively to identify and support the individual learning needs of every student; the quality of teaching, learning and

achievement is high.

Additional learning opportunities are available during breaks and lunchtimes. Many students attend 'twilight sessions' when they have the chance to access a wide range of sporting, academic and creative options.

Crickhowell students have numerous opportunities to visit other countries as part of their academic and extra curricular studies with regular visits to Poland, Germany, Italy, France, Austria, Uganda and Dubai. Our latest long distance expedition took students into Jordan.





# AL HIGH SCHOOL

We have a very strong commitment to education for Sustainable Development and Global Citizenship and close links with St. Peter's School in Uganda and other learning communities across the world.

As a school we are committed to developing the use of technology to enhance learning; this includes interactive software, e-learning and video conferencing facilities. We have recently upgraded our ICT network across the school to include wi-fi access which has proved very successful in extending learning opportunities for all our students.

We welcome students of all abilities to join our successful learning community.



“THE MOST STRIKING FEATURE OF THE SCHOOL IS ITS STRONG ETHOS OF LEARNING, IN WHICH VERY GOOD BEHAVIOUR IS THE NORM AND MOTIVATION IS HIGH. IN THIS ATMOSPHERE, PUPILS' AND STUDENTS' DEVELOPMENT - ACADEMIC, SPIRITUAL, MORAL, SOCIAL AND CULTURAL - THROUGH CURRICULAR AND EXTRA-CURRICULAR EXPERIENCES, IS EXCEPTIONALLY GOOD.”

**MOST RECENT ESTYN INSPECTION**

**HEAD OF SIXTH FORM:** Mrs Kate Thomas  
**ADDRESS:** New Road, Crickhowell, Powys NP8 1AW  
**T:** 01873 813500 **E:** office@crickhowell-hs.powys.sch.uk  
**www.crickhowell-hs.powys.sch.uk**



# SOUTH POWYS SCHOOLS GWERNYFED

**GWERNYFED SIXTH FORM PROVIDES A HARD WORKING, SUCCESSFUL AND ENJOYABLE ENVIRONMENT IN WHICH TO PURSUE YOUR CHOSEN LEARNING PATHWAY. STUDENTS HAVE FELT THE BENEFIT OF HAVING A SMALL SIZED SIXTH FORM, WHERE TEACHERS ARE CARING, COMMITTED AND EXCELLENT AT TEACHING. OUR SIXTH FORM STUDENTS ARE SUCCESSFUL WITH 2010 STUDENTS BEING ACCEPTED ONTO EITHER THEIR FIRST OR SECOND CHOICE COURSE AT UNIVERSITY.**

You will find us supportive and friendly, being able to provide an enviable range of potential areas for study with the development of the Powys Local Curriculum.

The new style of accessing the individual Learning Pathway provides not only the opportunity to develop academic and intellectual skills, but the additional freedom to meet academic and career needs most effectively. Being a member of the Sixth Form at Gwernyfed involves a great deal more than the pursuit of academic courses. As part of our

pastoral programme, we include a number of activities where students take advantage of the opportunity to work with and support the studies of younger pupils, and can be involved in the APAUSE scheme, Childline scheme and Community Sports Leadership award. Year 12 students get the opportunity to act as mentors to pupils in Year 7 and 8 to promote the ethos of responsibility. These activities provide the basis for skills development; accredited under the Welsh Baccalaureate qualification, while providing invaluable

evidence to feed into UCAS application for university.

The Duke of Edinburgh again features amongst the extra-curricular activities, along with the extended opportunities to travel to Barcelona for Business Studies and Art, or further afield to support the pupils in Hay's twin town in Timbuktu, or study and inform other cultures and their comparative educational systems, like the group last year who visited Columbia. We are very proud that our students from a small rural school consider it important that they:



# HIGH SCHOOL

“ A PARTICULAR STRENGTH OF THE SCHOOL IS THE WAY IN WHICH PUPILS ACROSS THE AGE RANGE HELP AND SUPPORT ONE ANOTHER. THERE IS A REAL SENSE OF COMMUNITY WITHIN THE SCHOOL THAT HELPS FOSTER LEARNING. ”

ESTYN



‘develop an awareness and sensitivity to other cultures and are encouraged to gain a global awareness.’

Please contact Miss Rebecca Savage, Senior Pastoral Manager, should you require any further information.

HEAD OF SIXTH FORM: Mrs C Ricketts

ADDRESS: Three Cocks, Brecon, Powys LD3 0SG

T: 01497 847445 E: [office@gwernyfed-hs.powys.sch.uk](mailto:office@gwernyfed-hs.powys.sch.uk)

[www.gwernyfed-hs.powys.sch.uk](http://www.gwernyfed-hs.powys.sch.uk)



YSGOL UWCHRADD  
LLANDRINDOD HIGH SCHOOL  
'Dysgu i ddysgu gydol oes' 'Learning to learn for life'

# SOUTH POWYS SCHOOLS LLANDRINDOD HIGH SCHOOL

THE SIXTH FORM IS A VERY IMPORTANT PART OF LLANDRINDOD HIGH SCHOOL. IT NOT ONLY PROVIDES THE PROGRESSION INTO HIGHER EDUCATION AFTER KEY STAGE 4, BUT IT ALSO GIVES AN OPPORTUNITY TO BE ACTIVELY INVOLVED IN THE LIFE AND WORK OF THE SCHOOL.

The AS, A2 and equivalent vocational courses that we offer give access to university, while key skills demonstrate a student's ability in communication, number and information technology. Almost all of those who embark on courses remain to complete them successfully.

The organisation and ethos of the Sixth Form allows for the ideal transition between compulsory schooling and the need for students to take

responsibility for their own learning. The school offers good teaching, tutorial support, careers guidance, work experience and a wide range of social, cultural and community opportunities.

Llandrindod High School always aims for excellence and this is achieved in an environment where students are secure and happy. Our expectations are that Sixth Form students will work hard and, therefore, be able to take full advantage of the expertise and commitment of our staff. We are able to provide high quality teaching within excellent study facilities. The school also encourages the students to give some time to help others, through community service, either within the school or the wider community.

We are a Welsh Baccalaureate School and this adds a valuable dimension to subjects and courses that can be followed between the ages of 14 to 19. It

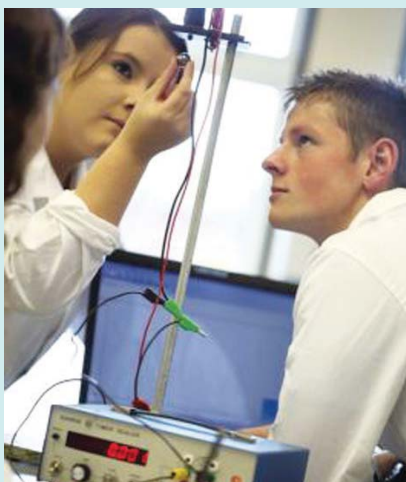


encourages independence and adds 'real life' experience to the curriculum.

We are also very proud of the pastoral support that is available to all students and which encourages them to achieve their full potential. This combines with an excellent Enrichment Programme and a wide range of social activities organised by the Sixth Form Committee.

Don't simply take our word for it. Ask the students who are currently studying with us and you will get a very positive response from them.

Our recent Estyn inspection report also emphasises the outstanding provision provided at post 16.







They said:

“ IN THE SIXTH FORM, TEACHING IS CONSISTENTLY GOOD AND FREQUENTLY OUTSTANDING. THE OUTSTANDING AND GOOD FEATURES OF TEACHING IN THE SIXTH FORM INCLUDE:

- very good working relationships between teachers and students;
- the development of students' capacity to take responsibility for their own learning;
- teachers' high expectations of success and strong subject knowledge;
- very good questioning which provides opportunities for students to explore ideas and embed understanding; and
- meticulous planning of a wide range of strategies and resources appropriate to the work being undertaken. ”

**ESTYN**



**HEAD OF SIXTH FORM:**  
Mrs Alison Long

**ADDRESS:**  
Dyffryn Road,  
Llandrindod Wells,  
Powys LD1 6AW

**T:** 01597 822992

**E:** office@llandod-hs.  
powys.sch.uk

**www.llandod-hs.powys.sch.uk**



# SOUTH POWYS SCHOOLS YSGOL MAESYD DERWEN

**OUR SCHOOL HAS A STRONG TRADITION IN PROVIDING SIXTH FORM EDUCATION. WE ARE IMMENSELY PROUD OF THE ACHIEVEMENTS OF OUR STUDENTS AND EVERY YEAR ALL ARE ABLE TO PROGRESS TO THEIR CHOSEN DESTINATIONS.**

The teachers at Ysgol Maesydderwen are highly qualified and expert at delivering post-16 education. The quality of education they are able to provide is something you can trust. As the most senior members of the school, there is a sense of community spirit amongst the Sixth Form. When you become a member of the Sixth Form you will enjoy a different learning experience. You will be encouraged to learn more independently, shouldering responsibility and making the most of opportunities on offer. Privileges and freedom are there to be enjoyed in return for high expectation in attitude

and commitment to study. Estyn School Inspection November 2010 concluded that...

**“The school offers a broad in appropriate range of learning opportunities throughout the key stages.”**

**“The school provides a high level of care.”**

**“The school provided many extra curricular opportunities for pupils to enrich their experiences.”**

We also give our students the opportunity to study the Welsh Bacallaureate. Pupils are able to choose 3 or 4 courses to study alongside the Welsh Bacallaureate, both A level or Vocational courses. UCAS has allocated 120 tariff

points to the Welsh Bacallaureate core which students can combine with the points they gain in their other courses (the options) to gain entry to university.

There is a strong support network at Ysgol Maesydderwen. You will be assigned a Sixth Form Tutor who is very experienced and will advise you, monitor your progress and help with any problems you may encounter. You will be able to take responsibility, and contribute to the life of the school and local community. These experiences will give you a considerable advantage when applying for jobs and courses at Higher Education institutions.



# YDDERWEN

Sixth Formers are responsible for co-ordinating sponsored events, stalls and fancy dress collections within the school and out in the wider community and the climax of 'Charity Week' is a concert when the talents of the whole school are harnessed in a programme of music, comedy and mayhem programmed and presented by the Senior Team and other Sixth Formers.

**"The buddy system is an excellent way to help the younger years at the school. If you need only help or support there is always someone around to help you whenever you need it."**

**Rhian Jones 12**

**"The courses are very challenging and are a big jump from GCSE. The sense of friendship and equality between other sixth formers and teachers is very**

**encouraging. Studying here is great. The buddy system is a great idea by giving us a chance to communicate with other pupils below our year."**

**Ellen Green 12**

The 5x60 project is currently working in secondary schools to extend the extra curricular programme and have set their sights on encouraging those who do not take part in sport to get active. Along with this, 5x60 looks to identify young leaders within the sixth form to help run lunch-time and after school clubs, many of our students have taken part within the programme and are a great asset to the team, in which the project rewards the volunteers with the

chance to gain qualifications such as tag rugby leaders, dodgeball level one coaching award and child protection in sport to name a few.

Pupils with Additional Learning Needs are welcome in the Sixth Form.

## EXPANDING HORIZONS

As part of our commitment to offering the best possible opportunities to our students this year we have in collaboration with the Open University and Coleg Powys, given our students the chance to sample modules of a degree course.

**HEAD OF SIXTH FORM:** Mr Matthew Burrows  
**ADDRESS:** Tudor Street, Ystradgynlais, Swansea SA9 1AP  
**T:** 01639 842115  
**E:** office@staff.maesydderwen-hs.powys.sch.uk



# SOUTH POWYS SCHOOLS PENMAES SCHOOL

**YSGOL PENMAES, SITUATED IN THE MARKET TOWN OF BRECON IS A BUSY, FORWARD-LOOKING SCHOOL THAT PROVIDES EDUCATION AND SPECIALIST FACILITIES FOR PUPILS (3-19YEARS) WITH A WIDE RANGE OF LEARNING DIFFICULTIES FROM ALL AREAS OF SOUTH POWYS, ALONG WITH SOME CHILDREN FROM NEIGHBOURING AUTHORITIES.**

We are privileged to have had major investment by the Local Authority as a result we now have a purpose built school with both residential and respite facilities on the same campus. These facilities include: Specialist Science/Design Technology, Food Technology/Life Skills, Sensory Studio, Interactive Soft Play, and Hydrotherapy Pool.

Visitors to Ysgol Penmaes continue to say that the school is a very friendly place. This is an important feature of our school as we feel that when pupils feel secure and valued they give their best. We remain committed to working in close partnerships with parents, the community, social services and health service and other professionals.

At Ysgol Penmaes we will continue to provide a safe, stimulating and challenging environment for all pupils. Our school curriculum has been tailored to meet the individual needs of pupils, with the emphasis upon individual achievements. This ensures that all pupils experience success.

## 14-19 LEARNING PATHWAYS

Pupils within this age range following the learning core through curriculum themes and numeracy and literacy sets. All pupils follow ASDAN programmes, (Transition Challenge, Bronze and Silver Award or Towards Independence as appropriate). Other option choices include French, Team Enterprise, Duke of Edinburgh's Award Scheme, Art and Design, Food Studies and vocational taster courses in collaboration with Coleg Powys. We have five learning coaches who provide learning coaching support Post 16 learners follow an extensive work experience programme as well as other work related activities, including work place visits and visiting speakers from local businesses. Our annual Industry Day takes place in November when a number of local organizations and

businesses run sessions for pupils to learn about the skills required in the workplace and in college.

## OUR RECENT ESTYN INSPECTION REPORT SAID THIS ABOUT THE SCHOOL:

"Ysgol Penmaes is a very good school and has a large number of outstanding features"

"The school's well planned curriculum is very well supported by a wide choice of well-planned options in the 14 - 19 Learning Pathways, and an impressive range of extra-curricular, off-site activities, links with local schools and colleges and work related experiences. "

"Pupils receive highly effective careers education and guidance. The school works closely with Careers Wales to ensure that pupils and students are fully aware of all the opportunities available to them."

**ASSISTANT HEADTEACHER:** Mr Dave Coombs

**ADDRESS:** Ysgol Penmaes, Canal Road, Brecon, Powys LD3 7HL

**T:** 01874 623508

**E:** [dcoombs@penmaes.powys.sch.uk](mailto:dcoombs@penmaes.powys.sch.uk)

**[www.penmaes.powys.sch.uk](http://www.penmaes.powys.sch.uk)**

# NORTH POWYS TIMETABLE MODEL

**POWYS 16+**  
PROSPECTUS  
2011-12

MON	TUES	WEDS	THURS	FRI
VC (D) MOODLE (D) YR13	MOODLE (B) VC (B) YR12		MOODLE (A) VC (A) YR12	VC (C) MOODLE (C) YR13
BLOCK C YR13	BLOCK A YR12		BLOCK B YR12	BLOCK D YR13

# NORTH POWYS COLLABORATIVE SUBJECTS

## KEY

Caer = Caereinion  
CP = Coleg Powys  
JB = John Beddoes  
LL = Llanfyllin  
Llani = Llanidloes  
NHS = Newtown  
WHS = Welshpool

	SUBJECT (TUES)	SUBJECT (THURS)
COLEG POWYS	BTEC L3 Countryside Management (CP) BTEC L3 Sport (CP) BTEC L3 Performing Arts (CP) BTEC L3 Media, TV & Film (CP) BTEC Media Games Development (CP) BTEC L3 Travel & Tourism (CP) BTEC L3 Child Care (CP)	BTEC L3 Health & Social Care (CP) BTEC L3 Media, TV & Film (CP) BTEC L3 Media Interactive (CP) BTEC L3 Public Services (CP) BTEC Hospitality & Catering (CP)
LLAN NEWYDD TRISGOL	A Level Music (JB/NHS) A Level RE (NHS) A Level Welsh Second Lang (JB/NHS) BTEC L3 Fashion & Clothing (NHS/CP) A Level Geography (WHS) A Level Product Design (JB) A Level Law (CP) A Level Spanish (LL) BTEC L3 Engineering (LL) A Level Further Maths (LL) BTEC L3 Hospitality & Catering (WHS) A Level PE (JB) A Level Drama (WHS) A Level Art & Design (Fine Art) (JB) A Level Art & Design (Photography) (JB) A Level Art & Design (Graphics) (JB)	A Level Spanish (Llani) A Level German (JB) A Level French (NHS/JB) A Level Politics (LLani) BTEC L3 Engineering (NHS/CP) BTEC L3 Music Technology (NHS) A Level Geography (JB/NHS) BTEC L3 Landbased (LL) A Level Welsh (Caer) BTEC L3 Applied Science (Forensic) (JB) A Level Psychology (WHS) A Level Biology (WHS) A Level French (WHS) A Level Business (WHS) BTEC L3 ICT (WHS) BTEC L3 Photography (CP)



# NORTH POWYS SCHOOLS JOHN BEDDOES

**JOHN BEDDOES SCHOOL WAS FOUNDED IN 1565 AND IS A SMALL 11 – 18 SCHOOL WITH A PROUD RECORD OF ACADEMIC, SPORTING, CULTURAL, AND SOCIAL EXCELLENCE. BEING A SMALL SCHOOL THERE IS A STRONG SENSE OF BEING PART OF A FAMILY WHERE EVERY INDIVIDUAL STUDENT IS SUPPORTED AND CARED FOR IN THEIR DEVELOPMENT AND IN PREPARING THEM FOR FURTHER EDUCATION, TRAINING, AND THE WORLD OF WORK, AND TO HELP THEM BECOME ACTIVE CITIZENS OF THE FUTURE.**

In addition to a broad range of AS and A Level options, John Beddoes has an established vocational programme of courses available through the Powys 14-19 Network enabling students to experience a broad range of opportunities tailored to their individual needs and aspirations. An individual learning pathway is implemented with guidance from tutors.

All students also undertake the Welsh Baccalaureate Qualification at Advanced Level which recognises achievement across a wide range of activities including work experience and careers, community participation, Personal and Social Education and through the accreditation of Essential Skills Wales. These Essential Skills Wales (such as Communication, Application of

Number, and ICT) alongside the wider key skills (Problem Solving, Working With Others, and Improving Own Learning and Performance) are recognised as evidence of the ability to work and learn effectively and are highly valued by colleges, universities, and employers.

John Beddoes students have access to excellent sporting facilities with an enviable range



# JOHN BEDDOES SCHOOL

of opportunities. A flourishing 5x60 sports programme responds to the needs and interests of the students, and offers the opportunity to undertake coaching training. Students are also able to experience a wide range of cultural activities. These include French and German exchanges and other visits that not only develop language skills but also develop understanding of different cultures. Visits to Gambia have included working on educational projects with our partner school. This has been followed by whole school fundraising activities to enhance the educational provision for our Gambian partners. A strong tradition of theatrical productions exists and drama and music work closely together to stage such recent musicals as 'Oliver!', and 'Fiddler on the Roof'. Frequent theatre, museum, and art

gallery visits, history field trips (including Berlin), cross-curricular trips such as Art and Technology and a planned visit to New York, and geography residential fieldwork enhance the quality of the provision by broadening the experiences of students and visits to the school by poets, authors, politicians, broadcasters, public figures, theatre companies, and the like are a regular feature of the school calendar.

John Beddoes School encourages all students to become active members of the school community and the School Council is central to the development and growth of the school and plays a vital role in the decision-making and improvement process.

**IN ADDITION TO THE SUBJECTS IN THE COLLABORATIVE BLOCKS WE OFFER:**

- Biology
- Chemistry
- Drama & Theatre Arts
- English Literature
- German
- History
- Law
- Mathematics
- Physics
- PE
- Psychology

**HEAD OF SIXTH FORM:** Miss Steph Davies  
**ADDRESS:** Presteigne, Powys LD8 2AY  
**T:** 01544 267259 **E:** office@johnbeddoes.org  
**www.johnbeddoes.org**



# NORTH POWYS SCHOOLS LLANFYLLIN

**LLANFYLLIN HIGH SCHOOL IS A CARING AND ORDERED COMMUNITY WITH AN ATMOSPHERE OF CALM AND PURPOSEFUL LEARNING. PUPILS ARE TREATED AS INDIVIDUALS AND WE RECOGNISE AND CELEBRATE THEIR DIFFERENT ABILITIES, APTITUDES AND INTERESTS. WE WORK HARD TO ENSURE EVERY PUPIL IS HAPPY, SAFE AND SUCCESSFUL - A CREDIT TO THEMSELVES, THEIR FAMILY AND LLANFYLLIN HIGH SCHOOL.**

As a school in Wales, we are fully committed to maintaining a warm Welsh ethos in terms of language and culture. This reflects the fact that the Welsh language, heritage and traditions are an integral part of the national identity. All students have the opportunity to leave the school with a firm

grounding in Welsh or to be fully bilingual.

We expect and encourage the highest standard of behaviour from our pupils at all times. All pupils are expected to follow our Code of Conduct so that effective teaching and learning can take place. Pupils will only achieve their full potential if they feel safe and above all are happy. We have a strong pastoral care system, PSE programme and Behaviour Policy which together ensure a secure, caring and friendly environment in which to learn.

Our sixth form is very popular and oversubscribed. Most of our students stay on to take AS and A2 level courses. Pupils who wish to study at level 3 including A2/AS levels and BTEC are accepted if they are well prepared and able to study three or four subjects at





# HIGH SCHOOL

this level and their acceptance depends on their achievement in an appropriate number and standard of level 2 GCSE and BTEC subjects and a consideration of whether returning to school is the best course of action for the individual. A useful guide, a minimum of five passes in different subjects are expected at 'C' grade or better but if a pupil has not achieved this then of course each case is discussed individually.

Subjects through the medium of Welsh are available in a number of curriculum areas and pupils are encouraged to continue their Welsh medium

education into Key Stage 5 wherever possible.

All Sixth Formers are expected to follow a Core Studies programme. The Sixth Form have their own Common Room and extensive supervised Study facilities.

Working in partnership with Caereinion and Welshpool High Schools we are pleased to extend our curriculum as a consortium of schools. The level 3 courses we offer on this basis are Engineering, Landbased Studies, Hospitality and Catering, Spanish, Welsh Second Language and Further Maths.

**THE FOLLOWING SUBJECTS ARE OFFERED AT AS / ADVANCED LEVEL SUBJECT TO DEMAND AND RESOURCES:**

- |                  |                                 |
|------------------|---------------------------------|
| Fine Art         | Welsh (First & Second Language) |
| Biology          | Computing                       |
| Business Studies | Design Technology               |
| 3D Studies       | Theatre Studies                 |
| Chemistry        | Media Studies                   |
| English          | Textiles                        |
| Electronics      | Critical Thinking               |
| French           | Land Based Studies              |
| Spanish          | Engineering                     |
| Geography        | Further Maths                   |
| History          | Spanish                         |
| Mathematics      |                                 |
| Music            |                                 |
| Physics          |                                 |
| Sports Studies   |                                 |
| Psychology       |                                 |

Students will also be expected to follow the Welsh Baccalaureate course too.

**HEAD OF SIXTH FORM:** Mr Peter Jessop  
**ADDRESS:** Llanfyllin, Powys SY22 5BJ  
**T:** 01691 648391 **E:** office@llanfyllin-hs.powys.sch.uk  
**www.llanfyllin-hs.powys.sch.uk**



NORTH POWYS SCHOOLS

# LLANIDLOES HIGH SCHOOL

**LLANIDLOES HIGH SCHOOL IS AN 11-18 DUAL-STREAM COMPREHENSIVE COMMUNITY SCHOOL. THE SCHOOL SERVES THE TOWN ITSELF AND A WIDE SURROUNDING AREA.**

The school is a caring environment with high expectations of all of our learners. We encourage all learners to reach their full potential and offer the support and guidance to help them achieve their aims and ambitions. We keep parents informed of their child's progress on 3 occasions through the year in addition to parents' evening; additionally, we get in contact whenever we feel necessary in order to support our learners. We offer a structured induction programme at the beginning of Sixth Form.

All Sixth Form students can choose from a broad range of

Level 3 qualifications including AS, A2 and Level 3 BTEC courses. Students can study vocational qualifications alongside their traditional academic qualifications. Sixth Formers also have access to courses run by our partners in the 'Llan Newydd' collaboration (John Beddoes and Newtown High School, and Coleg Powys).

We run an established Advanced Welsh Baccalaureate Qualification (equivalent to an A at A-level). Through the 'Bac' students are involved in a wide range of activities from 'Mock UN Debates' and learning British Sign Language, to making films or artwork to

illustrate the Universal Declaration of Human Rights. They also choose a topic of their choice for their 'Individual Investigation' and raise money for charity each year.

Politicians and other external speakers regularly visit the school, and students have opportunities to go on many visits as part of the 'Bac' and as part of their chosen subjects.

Sixth Formers have a strong tradition of making a significant contribution to the school through the 'Community Participation' element of the 'Bac'. Sixth Formers are involved in 'Paired Reading', 'Numeracy', 'Peer Mentoring' - for which they are trained by ChildLine - and sports activities such as 5x60 and Dragon Sports.

The majority of our Sixth Formers go on to university after they finish their studies



with us, with up to 40% of those going to Russell Group universities each year. Most students go on to their 'first choice' university. We offer guidance through the whole process including a residential trip to a university, and a UCAS evening for parents, too!

At Llanidloes High School, we have a designated Sixth Form block which includes a study centre with IT facilities and two common rooms.

Comments made in the 2009 Estyn inspection of the school include:

- "The arrangements for assisting pupils to transfer from one key stage to another are outstanding from KS4 to the sixth form".
- The outstanding ranges of extra-curricular activities which are provided by the school enrich learners' personal development".
- "Standards of students' social and moral skills are outstanding".

GOFAL  
(Giving Opportunities  
For All to Learn)

### THE COURSES AVAILABLE

#### ADVANCED SUBSIDIARY (AS)/ ADVANCED (A) GCE LEVEL COURSES

The following Advanced Subsidiary (AS)/  
Advanced (A) Level courses will be offered:

Applied Business	Media Studies
Art and Design	Music
Biology	Philosophy
Chemistry	Physical Education
Design & Technology: Product Design	Physics
Design & Technology: Food	Politics
Drama & Theatre Studies	Psychology
English Literature	Religious Studies*
Further Maths (Year 13 only)	Science (Applied)
French*	Travel & Tourism
Geography	Spanish
Health and Social Care	Welsh (First Language)
History	Welsh (Second Language)
Information Communications Technology	Welsh Baccalaureate (compulsory for all)
Mathematics	

\* Subjects (above) which may be offered in collaboration with other schools / providers

**HEAD OF SIXTH FORM:** Mrs Jane Jerman  
**ADDRESS:** Llanidloes, Powys SY18 6EX  
**T:** 01686 412289 **E:** office@llanidloeshs.org.uk



# NORTH POWYS SCHOOLS NEWTOWN HIGH SCHOOL

**NEWTOWN HIGH SCHOOL IS A KS3-5 (11-18) COMPREHENSIVE SCHOOL LOCATED IN NEWTOWN. THE SCHOOL SERVES THE TOWN ITSELF AS WELL AS A LARGE RURAL SURROUNDING AREA.**

At Newtown High School we aim to promote 'Cyfle' (Opportunity in Welsh) - for us this stands for:

Caring Yields a Flourishing Learning Environment.

The school's main aims are to:

- create a learning environment where pupils and staff enjoy a positive experience;
- provide all pupils with the opportunity to reach their potential;
- provide a broad and balanced curriculum that prepares young people for a bilingual and multicultural society;
- aim for excellence by setting high expectations for all; and
- foster a school ethos that encourages self-evaluation.

At Key Stage 5 students can choose from a broad range of level 3 qualifications including AS, A2 and Level 3 BTEC courses. Since September 2010 all Y12 students have studied The Welsh Baccalaureate at advanced level (Level 3). Students

complete core activities such as Wales Europe and the World, Community projects and Team Enterprise projects. The vast majority of UK and European universities now recognise the Welsh Baccalaureate and are happy to accept the qualification as part of a prospective student's portfolio.

KS5 students are lucky enough to have easy local access to courses run at Coleg Powys's Newtown Campus, which is within walking distance of the school. All students have access to a wide range of vocational level 3 courses which carry the same weighting as AS and A2 qualifications. Many students study these vocational courses alongside their traditional academic qualifications. Vocational qualifications are also available on the school campus; these include Music Technology, Fashion &

Clothing and Engineering.

6th form students at Newtown High School have access to wide range of extra curricular activities, including sporting, musical and cultural activities. Post 16 students are encouraged to take on leading roles within the school and are seen as positive role models by all lower school students.

All students are encouraged to take part in Learner Voice activities such as The School Council, SNAG (School Nutrition Action Group) and our award winning ECO Committee.

In the school's most recent inspection report, ESTYN stated that "Newtown High School is now a good school with several outstanding features". In 2010 the school enjoyed its best ever exam results.

**HEAD OF SIXTH FORM:** Mrs Angela Francis

**ADDRESS:** Newtown, Powys SY16 1JE

**T:** 01686 626304 **E:** office@newtown-hs.powys.sch.uk

**www.newtown-hs.powys.sch.uk**



# HIGH SCHOOL

KEY
Caer = Caereinion
CP = Coleg Powys
JB = John Beddoes
LL = Llanfyllin
Llani = Llanidloes
NHS = Newtown
WHS = Welshpool

**NEWTOWN HIGH SCHOOL POST 16 LEARNING PATHWAYS**  
All students will study The Welsh Baccalaureate at Advanced Level and 4 subjects from separate option blocks.

<b>BLOCK 1</b>	AS Art	AS Biology	AS Media Studies	AS Business Studies
<b>BLOCK 2</b>	AS English	AS Maths	AS PE	
<b>BLOCK 3</b> (Tues)	AS Chemistry	AS Music	AS Welsh	AS RE
	BTEC L3 Fashion and Clothing	BTEC L3 Childcare	BTEC L3 Countryside Management	BTEC L3 Sport
	BTEC L3 Performing Arts (Musical Theatre)	BTEC L3 Media TV and Film	BTEC L3 Media (Games Development)	BTEC L3 Travel and Tourism
	BTEC L3 Hospitality & Catering (WHS)	AS Law (L)	AS Spanish (LL)	AS Further Maths (LL)
	AS PE (JB)	AS Drama (WHS)	BTEC L3 Engineering (LL)	BTEC L3 Photography (CP)
	A Level Art & Design (Fine Art) (JB)	A Level Art & Design (Photography)(JB)	A Level Art & Design (Graphics) (JB)	
<b>BLOCK 4</b>	AS History	AS Physics	AS Applied Science	
<b>BLOCK 5</b> (Thurs)	AS ICT	AS Geography	AS Psychology	AS French
	BTEC L3 Engineering	BTEC L3 Music Technology	AS Drama	BTEC Level 3 Media (Interactive)
	BTEC L3 Public Services	BTEC L3 Hospitality and Catering	BTEC L3 Health and Social Care	BTEC L3 Media (TV and Film)
	AS Politics (L)	BTEC Landbased Technology (LL)	AS Welsh (C)	AS ICT (WHS)
	BTEC L3 Applied Science (Forensics) (JB)	AS Biology (WHS)	AS Spanish (L)	AS German (JB)



# NORTH POWYS SCHOOLS WELSHPOOL

WELSHPOOL HIGH SCHOOL IS AN 11-18 MIXED COMPREHENSIVE COMMUNITY SCHOOL LOCATED IN WELSHPOOL. THE SCHOOL SERVES THE TOWN ITSELF AS WELL AS A LARGE RURAL SURROUNDING AREA.

HIGH EXPECTATIONS LEAD TO THE DEVELOPMENT OF RESPONSIBLE AND WELL EDUCATED YOUNG PEOPLE. IN MEETING THESE CENTRAL AIMS WE SEEK TO INVOLVE PARENTS, STUDENTS AND STAFF IN A PURPOSEFUL AND PRODUCTIVE PARTNERSHIP.



All sixth form students can choose from a broad range of Level 3 qualifications including AS, A2 and Level 3 BTEC courses. Many students study vocational courses alongside their traditional academic qualifications.

Sixth form students have the opportunity to have easy access to 'Trisgol' courses run with out partner institutions at Newtown, Llanfyllin and Llanfair.

At Welshpool High School there is a sixth form study centre, which consists of a

resource area and IT facilities. Every student is required to attend five study sessions per week as part of their timetable.

Structured induction days, worldwide exchange visits, a strong tradition of theatrical production, frequent theatre/museum and art gallery visits, subject specific field trips, visits to school by poets, broadcasters, politicians and public figures are a regular feature of the school calendar.



# HIGH SCHOOL

All sixth formers are encouraged to take a leadership role within the school. Important areas where the 6th formers make an important contribution are the Paired Reading Scheme, the Paired Maths Scheme, APAUSE, peer mentoring, the Sports Leadership Award and assisting tutor groups in the lower school.



## SUBJECT BLOCKS AT WELSHPOOL HIGH SCHOOL

BLOCK A (THURS)	BLOCK B (TUES)	BLOCK C	BLOCK D
Maths French Art Health & Social History Plus Collaborative Block Subjects	Biology History Business PE Plus Collaborative Block Subjects	Physics English Art D & T Media	Chemistry Geography Philosophy Spanish ICT

IN THE SCHOOL'S MOST RECENT INSPECTION REPORT IN NOVEMBER 2010, ESTYN STATED THAT  
**“ WELSHPOOL HIGH SCHOOL IS A GOOD SCHOOL WITH MANY SIGNIFICANT STRENGTHS ”**

**HEAD OF SIXTH FORM:** Mrs Amanda Cottrell  
**ADDRESS:** Welshpool, Powys SY21 7RE  
**T:** 01938 552014 **E:** office@welshpool-hs.powys.sch.uk  
**www.welshpool-hs.powys.sch.uk**



LOGO

# NORTH POWYS SCHOOLS YSGOL BRO

DEAR STUDENTS,  
YOU ARE APPROACHING A CRUCIAL PERIOD IN YOUR LIVES, WITH GCSE EXAMS AHEAD AND THE NEED TO CHOOSE THE EDUCATIONAL PATHWAY WHICH WILL BEST SUIT YOU FOR YOUR FUTURE PLANS AND CAREERS.

I BELIEVE THAT THE SIXTH FORM AT YSGOL BRO DDYFI WOULD BE IDEAL FOR VERY MANY YOUNG PEOPLE WHO ARE SEARCHING FOR THEIR PERSONAL POST-16 EDUCATIONAL PATHWAY.

If you are inclined towards an academic pathway, then Ysgol Bro Ddyfi has an excellent record in the provision of AS and A levels. We can offer a large number of courses delivered by experienced teachers who are experts in their field. These subjects are available in English and in Welsh. We can also offer subjects such as Psychology through “distance learning” using video conferencing and co-operation with other

schools / colleges.

If you prefer to follow a vocational pathway, then we can offer a number of subjects. As a school we co-operate with a number of other establishments to ensure the best experience, such as Glynllifon, Glanllyn, Coleg Meirion Dwyfor, Coleg Powys and Penweddig and Tregaron schools.

What is great about Ysgol Bro Ddyfi is that you can also





# DDYFI

choose a combination of academic and vocational subjects. The vocational subjects are accepted by UCAS and universities; indeed the Welsh Assembly Government these days is promoting the development of vocational subjects because the skills are needed in the Welsh economy.

In addition to following 4 AS courses (or vocational courses or a combination), our students in September 2010 will also be doing the "Welsh Bac". This corresponds to an A grade at A Level. There is no examination and it supports what you already do in your chosen subjects as well as giving you the opportunity to improve your skills. The support of your personal Tutor is central to your success in achieving the Baccalaureate.

Although we are expanding, the Sixth Form is still

sufficiently small for us to be able to respond to the needs of the individual. We do not put subjects into 'option columns' and this allows young people to follow their own personal combination of subjects. All we ask is that you let us know of your requirements as soon as possible after the GCSE results so that we can adjust the timetable for your needs.

The Sixth Form offers a degree of freedom, but the teachers also ensure that care and support are always available. There are opportunities for personal development, such as giving a lead to younger pupils or participating in school activities such as

eisteddfodau, charity events, school show etc. Students are allowed to use the Youth Wing as a meeting area and for relaxing, and the excellent resources at the new Hyddgen Learning centre are available for private study. Our students are very happy here, and those who have joined us from other schools say that they found it very easy to settle in and make new friends.

Best wishes in the GCSE exams, and we look forward to welcoming you to the Sixth Form at Ysgol Bro Ddyfi. You are very welcome to call at any time to discuss your requirements.

Best of luck,  
Dafydd Jones

**HEAD OF SIXTH FORM:** Mrs Haf Ap Robert  
**ADDRESS:** Machynlleth, Powys SY20 8DR  
**T:** 01654 702012 **E:** office@broddyfi-hs.powys.sch.uk  
**www.broddyfi-hs.powys.sch.uk**



# NORTH POWYS SCHOOLS CAEREINION

**THE SIXTH FORM AT CAEREINION HIGH IS A SMALL INCLUSIVE GROUP WHERE EACH PERSON IS VALUED AND RESPECTED.**



Each member of the Sixth Form is given the full support and encouragement necessary to develop as individuals, to realise their full potential as well the skills necessary for successful study at post 16 level.

The Welsh Baccalaureate Qualification is compulsory for all (whose main base is at Caereinion High) consequently tutor groups are very small in number generally under ten in each year. The majority of our students go on to Higher Education.

Caereinion High is very proud of its extracurricular activities, be they sporting or cultural, each student is given the every opportunity and encouragement to fulfil their potential in these spheres.



# HIGH SCHOOL

## SUBJECT BLOCKS

OPTION 1	OPTION 2 (Tues)	OPTION 3 (Thurs)	OPTION 4	OPTION 5
Art	Bioleg	Cerdd Music	Biology	Daearyddiaeth
Chemistry	Business	Leisure	D & T	Maths
French	History	Physics	English	P E
Geography Hanes	Plus collaborative block subjects	RE	Welsh First Language	
		Plus collaborative block subjects		

**HEAD OF SIXTH FORM:** Mrs Claire Tinney  
**ADDRESS:** Llanfair Caereinion, Welshpool, Powys SY21 OHW  
**T:** 01938 810888 **E:** office@caer-hs.powys.sch.uk  
**www.caer-hs.powys.sch.uk**



## NORTH POWYS SCHOOLS



# YSGOL CEDEWAIN

**YSGOL CEDEWAIN, SITUATED IN THE MARKET TOWN OF NEWTOWN IS A BUSY, FORWARD-LOOKING SCHOOL THAT PROVIDES EDUCATION AND SPECIALIST FACILITIES FOR PUPILS (2 - 19 YEARS) WITH A WIDE RANGE OF LEARNING DIFFICULTIES FROM ALL AREAS OF NORTH POWYS, ALONG WITH SOME CHILDREN FROM NEIGHBOURING AUTHORITIES.**

Facilities we have at Ysgol Cedewain include: Specialist Design Technology/ICT suite, Food Technology/Life Skills, Multi Sensory Studio and Hydrotherapy Pool.

Visitors to Ysgol Cedewain continue to say that the school is a very friendly place. This is an important feature of our school as we feel that when pupils feel secure and valued they give their best. We remain committed to working in close partnerships with parents, the community, social services and health

service and other professionals.

At Ysgol Cedewain we will continue to provide a safe, stimulating and challenging environment for all pupils. Our school curriculum has been tailored to meet the individual needs of pupils, with the emphasis upon individual achievements. This ensures that all pupils experience success.

The Learning Core is at the heart of our 14-19 provision. All 14-19 learners have an Individual Learning Pathway

that is active allowing them to add to it all the time.

This Learning Pathway provides the opportunity for all our learners to get the most out of learning whether at school, in collaboration with Coleg Powys, Newtown High School and Brynllwarch School or via work based learning routes so that all our learners achieve worthwhile qualifications. This will help them to gain recognition in a wide range of ways that will be valued by work based learning providers, colleges and employers.

Each individual learning pathway is Flexible, provides a route through 14-19 education that suits each individual leading to worthwhile qualifications, offers a wide choice of courses for learners to follow at their own level and pace, allows the individual to broaden their experiences and develop new skills, gives them the opportunity to discuss their learning and progress with our fully accredited Learning Coaches,



# WAIN

offering personal support to all learners and helping them access information, advice and guidance on careers, education and training to suit their needs.

We deliver a varied mix of academic and vocational externally accredited (AQA, OCR, ASDAN, OCN and City and Guilds) courses, both formal, non-formal and informal that develop learners key skills, knowledge and understanding of themselves and the world around them. All 14-19 learners have opportunities to undertake work-focused experience as well as the Young Enterprise Scheme. We currently offer 39 externally accredited courses in our 14-19 school and this is expanding every year.

The Learning Core at Ysgol Cedewain identifies the skills, knowledge, understanding, values and experiences that all 14 - 19 learners need for further learning, employment in general, whatever learning pathway they choose to follow.

## THE KEY ELEMENTS OF THE LEARNING CORE ARE:

### KEY SKILLS

- Attitudes and Values
- Personal, Social, Sustainability and Health Matters
- Community Participation
- Careers Education and Guidance
- Work focused experience
- Other work related skills
- Welsh Language Skills
- Wales, Europe and the World
- Cultural / Sporting / Aesthetic / Creative / Experiences

Our 14-19 curriculum focuses on the learner, ensures skills development are integral in our curriculum, is flexible, supports bilingualism,

Curriculum Cymraeg/Wales, Europe and the World, equal opportunities, food and fitness, sustainable development, and global citizenship, and the world of work and enterprise.

Our Learning Coaches help learners to assess learners performance, identify areas where they are not doing as well as they could and discover what they need that will help them to learn better. Learning Coach support at Ysgol Cedewain provides support, guidance, coaching and mentoring to learners to help them plan their individual learning pathway, make decisions, identify goals and then to support their progress.

**HEAD OF SIXTH FORM:** Miss Angela Davies  
**ADDRESS:** Maesyrrhandir, Newtown, Powys SY16 1LH  
**T:** 01686 627454 **E:** office@cedewain.powys.sch.uk



NORTH POWYS SCHOOLS

# BRYNLLYWARCH HALL SCHOOL

THE PRIMARY AIM OF OUR CURRICULUM IS TO ENGAGE RELUCTANT PUPILS IN THE ACT OF LEARNING AS A PLEASURABLE AND PROFITABLE EXPERIENCE. OUR STUDENTS ARE OFFERED A WIDE RANGING AND VARIED CURRICULUM, WITH AN EMPHASIS UPON THE ACQUISITION OF KEY SKILLS.

Our students all have a Statement of Special Educational Needs. This forms the basis of all Individual Education Plans and is reviewed annually at an Education Review. Full subject reports are produced annually. In addition, students undergo a regular learning and achievement review as part of our internal assessment. This review informs the Individual Education Plan as well as the Personal Education Plans.

We have fourteen fully qualified and highly

experienced teachers. In addition we have fifteen full time teaching assistants who work in the classroom alongside the teachers.

Class sizes vary between 6 to 8 pupils and one to one support is offered in key skills areas to students who require it. Our older students have the opportunity to sit external examinations - usually Entry Level, ASDAN and BTEC. They also have the opportunity to experience learning outside of the school by attending Coleg Powys during Year 11. Work Experience is organised for all young people in Year 10, Year 11 and the Sixth Form. Careers advice is offered from Year 9 onwards by the Powys Specialist Careers Advisors.

There are clear expectations regarding pupil behaviour and each classroom teacher

monitors conduct through a well established points system. Failure to comply with the classroom "rules" usually results in a sanction e.g. loss of privileges/detention. Equally, good behaviour is rewarded with a 'student of the week' for the pupil earning the highest points for positive behaviour. Student of the week receives a £5 Argos Gift Voucher.

Our sixth form provision offers a wide range of activities and courses including Essential Skills, Numeracy, Literacy, ICT, RE, PSHE, BTEC Land Studies, Duke of Edinburgh - Bronze, Silver & Gold, Open College Network, Forest Schools, Estate Skills, BTEC Sport, GCSE Art and additional qualifications i.e. First Aid, Baby Sitting and Food Hygiene.

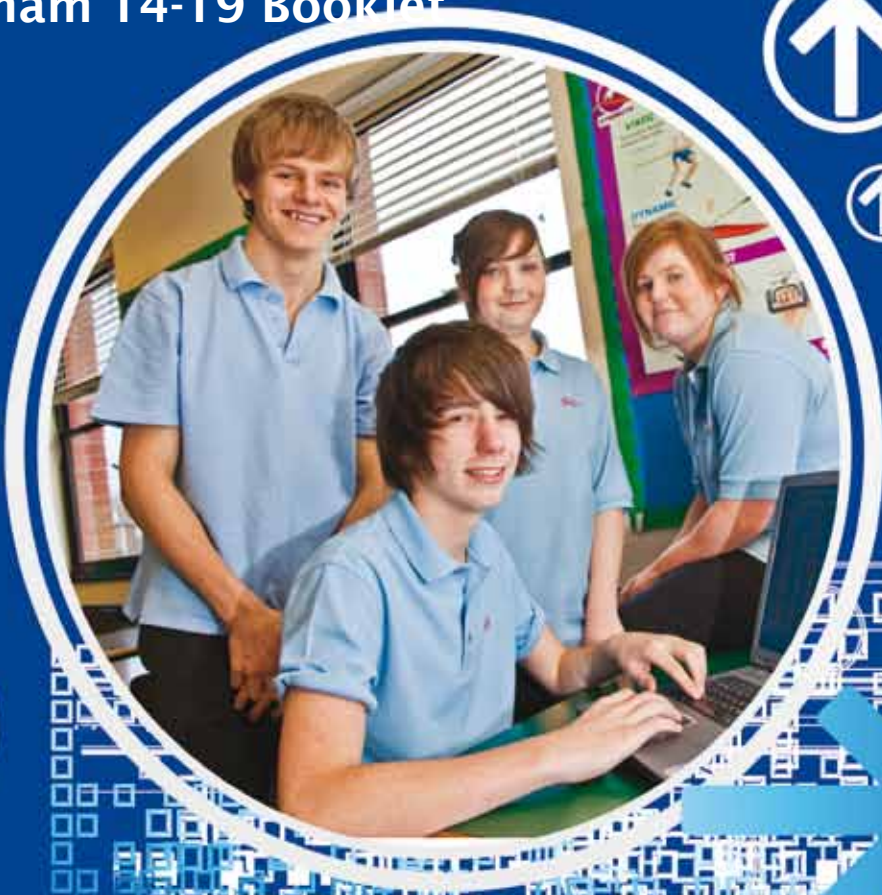


**HEAD OF SIXTH FORM:** Mr Jon Lewis

**ADDRESS:** Kerry, Nr. Newtown, Powys SY16 4PB

**T:** 01686 670276 **E:** office@brynlllywarch.powys.sch.uk

**www.brynlllywarch.powys.sch.uk**



# my choice



## Welcome to the Wrexham 14-19 Network My Choice Booklet



This booklet provides information about the choices available to all students in Years 10 and 11.

These choices provide a wide range of courses to give breadth to your studies. They are available through your school and the Wrexham 14-19 Network which is a partnership of schools and colleges within the Wrexham area. Most of the collaborative courses are available on Wednesdays, either for the full-day or just in the afternoon. Some are provided in the evenings from 4:30 to 6:30. These courses may be provided in another school or at Yale College. In addition some students may be offered an Enrichment course. Information about these courses can be found in the booklet as well.

Enjoy browsing through the broad subject range from *General* courses such as History, RE, French and Law to *Vocational Courses* including Hairdressing and Beauty Therapy, to Engineering and Small Animal Care.

You can select from one or more of the *Learning Pathways* and courses offered. Choose carefully. Ask your Tutor, Learning Coach or Careers Advisor at school if you need any help.

More information is available as follows:  
[www.careerswales.com](http://www.careerswales.com) for all the choices available through your school

The information is also available in printed form at your school.





# Your Learning Pathway 14 - 19

The Welsh Assembly Government goal is that by 2015, 95% of young people will be ready for high skilled employment or higher education by the age of 25.

To help in achieving this goal, Learning Pathways 14-19 was created for you between the ages of 14 and 19.

Learning Pathways covers six main areas and all 14-19 year olds have an entitlement to:

## 1. AN INDIVIDUAL LEARNING PATHWAY

A package of courses and learning opportunities leading to qualifications at the right level, suited to each individuals needs, aptitudes and interests.

## 2. WIDER CHOICE AND FLEXIBILITY

The opportunity for students to choose courses from a wide range of subject areas to suit their Individual Learning Pathway.

## 3. THE LEARNING CORE

The skills, knowledge, understanding, values and experiences which all students need in life whatever their learning pathway.

## 4. LEARNING COACHING

All students have an entitlement to Learning Coaching which may come from a specialist Learning Coach or from another member of staff.

## 5. PERSONAL SUPPORT

All students have access to support when they need it.

## 6. CAREERS ADVICE AND GUIDANCE

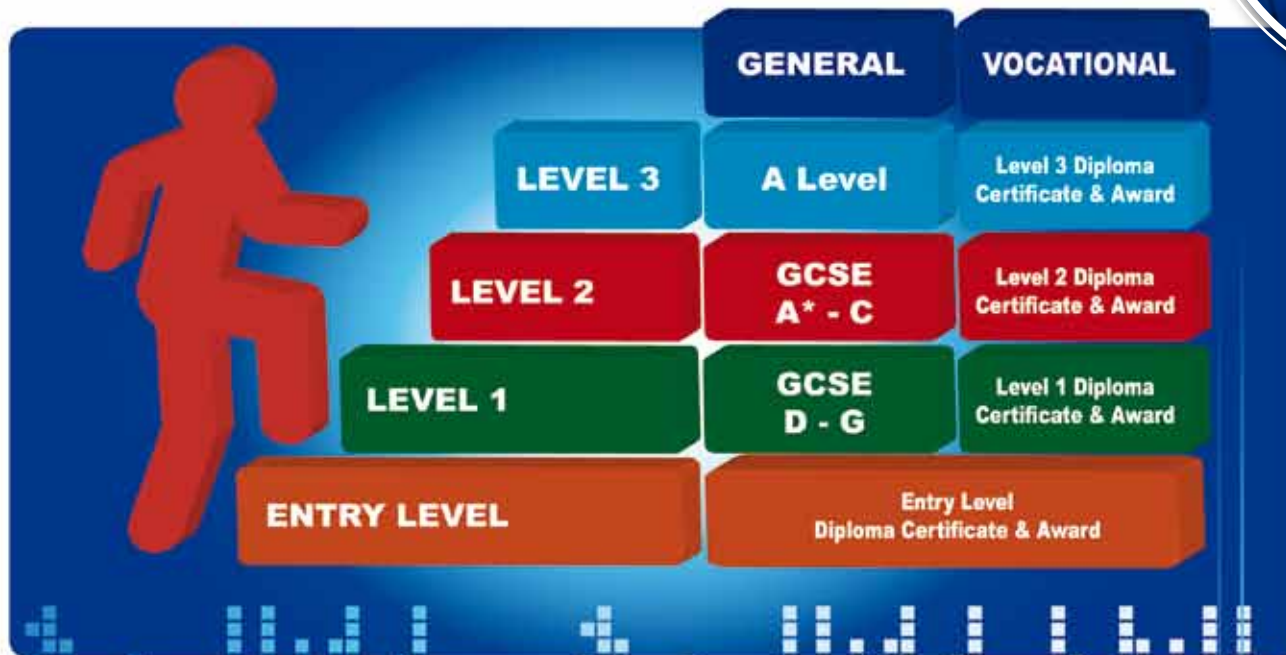
All students have access to impartial careers advice and guidance.



Both *General* and *Vocational* courses are available at all levels and both can lead to university or employment. Most students take a mix of *General* and *Vocational* courses in Key Stage 4. You should choose the courses that prepare you for your next stage in education, training or employment. Choosing one particular pathway does not commit you to that choice after the age of 16.

**GENERAL COURSES** include GCSEs and most are delivered in your school. Some general courses are shared between schools and the College. Most general courses are assessed through exams and some have coursework as well.

**VOCATIONAL COURSES** include BTECs and OCR Certificates. Some of these courses are delivered in school with a wider choice available in College. They are based on the knowledge skills and understanding required in employment. They are more practical in nature and are generally assessed through coursework assignments.





The following pages tell you about different Learning Pathways and the courses available. On each page you will find:

- An Introduction which gives you a broad idea of what the pathway is about
- The courses that are available for you at age 14 within each Learning Pathway  
*Please note: all students will study English, Welsh, Mathematics, Science, Religious Studies, Information Technology, Physical Education and the various elements of the Learning Core. These are essential for your future whichever pathway you choose to follow.*

In addition you will be asked to choose a number of options which could be any mix of *General* and *Vocational* courses. Most courses are provided in your school, but some courses are collaborative. For these courses your school is working with the other Wrexham Schools. Most of the courses take place at Yale College with some provided in High Schools. A collaborative course will have a mix of students from your school and other schools. The collaborative courses are listed later in the booklet.

- An indication of courses available at age 16 and examples of career opportunities within the Pathway

**PLEASE NOTE:** Some courses are useful for more than one Pathway. For example Science is needed for several pathways including Hair and Beauty, Construction and Land Based, as well as the more obvious Science and Engineering.

**ENRICHMENT COURSES**, available at Entry Level and Level 1, are offered to some students by their schools where the school feels the students will benefit from the provision. Further details are available later in this book.

## Creative Arts and Media

Do you love dance or music?

Are you always sketching or designing new outfits?

Do you enjoy putting sound to your own video, or making DVDs from your photos?

This could be for YOU

**KS 4 COURSES**

**GCSEs**  
Art & Design, Music, Drama, Media Studies, Textiles

**Vocational Courses**  
Performing Arts

**POSSIBLE PROGRESSION AT AGE 16**

**A-levels**  
Art & Design, Drama & Theatre Studies, Film Studies, Media Studies, Music, Photography, Textiles

**Vocational Courses**  
Art & Design  
Creative Media  
Performing Arts  
Production Arts  
Music technology

**Work Based Learning including Apprenticeship**

**PROGRESSION AFTER 18 INCLUDING UNIVERSITY**

Actor  
Theatre director  
DJ, Computer animator  
Illustrator  
TV and Film industry  
Photographer, Musician  
Designer  
Artist



## Science and Mathematics

Do you enjoy working with numbers?

Do you like doing experiments?

Do you enjoy learning about how things work?

This could be for YOU

**KS 4 COURSES**

**GCSEs**  
Additional Science, Applied Science  
Electronics, Geology  
Human Physiology, Maths  
Psychology, Science, Statistics

Three separate sciences (Physics, Chemistry & Biology)

**Vocational Courses**  
Applied Science

**POSSIBLE PROGRESSION AT AGE 16**

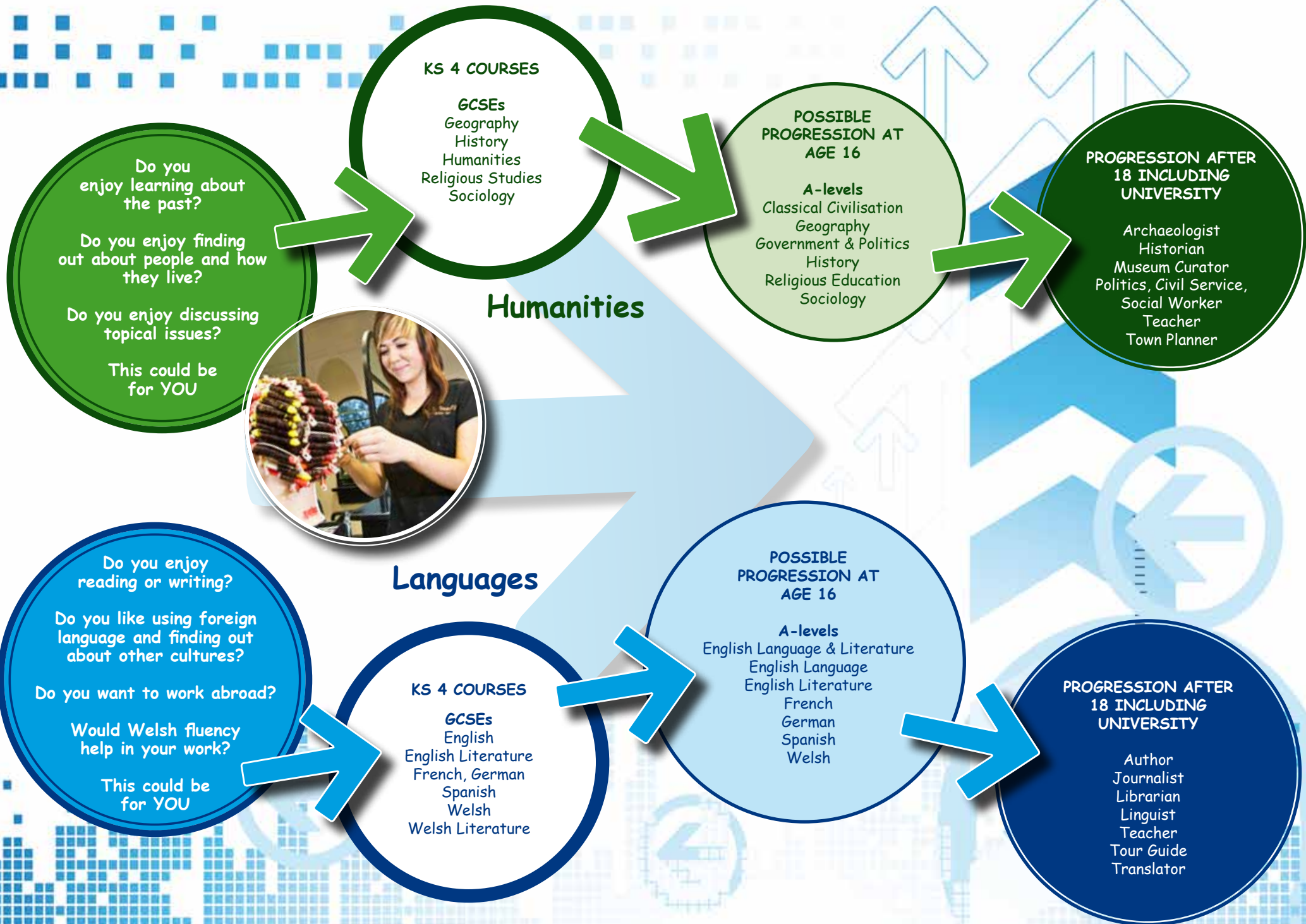
**A-levels**  
Biology, Chemistry  
Geology, Human Biology  
Mathematics  
Further Mathematics  
Physics, Psychology

**Vocational Courses**  
Applied Science

**Work Based Learning including Apprenticeship**

**PROGRESSION AFTER 18 INCLUDING UNIVERSITY**

Accountant, Doctor  
Human Resources  
Meteorologist, Nurse  
Physiotherapist, Psychologist  
Scientist, Teacher  
Technician, Vet



**Humanities**

**Languages**



Do you enjoy learning about the past?  
Do you enjoy finding out about people and how they live?  
Do you enjoy discussing topical issues?  
This could be for YOU

**KS 4 COURSES**  
GCSEs  
Geography  
History  
Humanities  
Religious Studies  
Sociology

**POSSIBLE PROGRESSION AT AGE 16**  
A-levels  
Classical Civilisation  
Geography  
Government & Politics  
History  
Religious Education  
Sociology

**PROGRESSION AFTER 18 INCLUDING UNIVERSITY**  
Archaeologist  
Historian  
Museum Curator  
Politics, Civil Service,  
Social Worker  
Teacher  
Town Planner

Do you enjoy reading or writing?  
Do you like using foreign language and finding out about other cultures?  
Do you want to work abroad?  
Would Welsh fluency help in your work?  
This could be for YOU

**KS 4 COURSES**  
GCSEs  
English  
English Literature  
French, German  
Spanish  
Welsh  
Welsh Literature

**POSSIBLE PROGRESSION AT AGE 16**  
A-levels  
English Language & Literature  
English Language  
English Literature  
French  
German  
Spanish  
Welsh

**PROGRESSION AFTER 18 INCLUDING UNIVERSITY**  
Author  
Journalist  
Librarian  
Linguist  
Teacher  
Tour Guide  
Translator

## IT and Computing

Are you able to help other people use their computer?

Do you design computer applications?

Do you want to know more about how computers work?

This could be for YOU

**KS 4 COURSES**

**GCSEs**  
Computing  
Information Technology

**Vocational Options**  
Information Technology

**POSSIBLE PROGRESSION AT AGE 16**

**A-levels**  
Computing  
Information Technology

**Vocational Courses**  
Information Technology  
ICT Skills for Business

**Work Based Learning including Apprenticeship**

**PROGRESSION AFTER 18 INCLUDING UNIVERSITY**

Computer programmer  
Data Manager  
Games Designer  
IT consultant  
Multimedia Computing  
Network Engineer  
Office Assistant



## Sport and Leisure

Are you keen on Sports or Outdoor Pursuits?

Do you like working with others and as part of a team?

Would you like to work in the Tourism Industry?

This could be for YOU

**KS 4 COURSES**

**GCSEs**  
Physical Education

**Vocational Options**  
Leisure and Tourism  
Sports studies

**POSSIBLE PROGRESSION AT AGE 16**

**A-levels**  
Physical Education

**Vocational Courses**  
Leisure & Tourism  
Sport  
Travel and Tourism

**Work Based Learning including Apprenticeship**

**PROGRESSION AFTER 18 INCLUDING UNIVERSITY**

Fitness instructor  
Holiday Rep  
Leisure centre manager  
Outdoor Pursuits Instructor  
Professional Sports Person  
Sports and Exercise Scientist  
Sports Coach  
Teacher  
Tourist Information Centre manager

# Design, Technology, Engineering & Construction

Do you enjoy practical work?

Do you help with DIY at home?

Do you enjoy designing and making things?

This could be for YOU

**KS 4 COURSES**

**GCSEs**  
Product Design  
Resistant Materials  
Graphics  
Food Technology  
Textiles

**Vocational Options**  
Engineering  
Construction



**POSSIBLE PROGRESSION AT AGE 16**

**A-levels**  
Design Technology, Electronics

**Vocational Courses**  
Automotive, Construction  
Civil Engineering, Trowel Occupations  
Painting and Decorating, Plastering  
Electrical/Mechanical Engineering  
Wood Occupations  
Maintenance Operations  
Floor laying, Plumbing  
Electrical Installation

**Work Based Learning including Apprenticeship**

**PROGRESSION AFTER 18 INCLUDING UNIVERSITY**

Architects technician  
Bricklayer, Cabinet maker  
Decorator, Design Engineer  
Electrician  
Electronics Engineer  
Motor vehicle Technician  
Plumber  
Quantity Surveyor  
Site/Building Engineer

# Business and Finance

Are you interested in finance or law?

Do you want to run your own business?

Do you enjoy organising events?

This could be for YOU

**KS 4 COURSES**

**GCSEs**  
Business Studies  
Economics  
Law

**POSSIBLE PROGRESSION AT AGE 16**

**A-levels**  
Business Studies  
Economics  
Law

**Vocational Courses**  
Administration  
Business

**Work Based Learning including Apprenticeship**

**PROGRESSION AFTER 18 INCLUDING UNIVERSITY**

Accountant  
Accounts Clerk  
Admin Officer, Bank Clerk  
Business Manager  
Buyer, Economist  
Entrepreneur  
Lawyer, Legal Secretary  
Sales Manager

## Land Based

Do you enjoy helping in the garden?  
 Do you enjoy working with animals?  
 Do you like working outdoors?  
 This could be for YOU

**KS 4 COURSES**  
 Vocational Options  
 Horticulture  
 Small Animal Care

**POSSIBLE PROGRESSION AT AGE 16**  
 A-levels  
 Biology  
 Vocational Courses  
 Agriculture, Animal Care  
 Floristry, Forestry  
 Horse Care & Management  
 Horticulture  
 Work Based Learning including  
 Apprenticeship

**PROGRESSION AFTER 18 INCLUDING UNIVERSITY**  
 Animal Care  
 Animal Nurse  
 Farm worker  
 Florist  
 Gardener  
 Horse Trainer  
 Landscape Architect



## Services to People

Do you enjoy helping other people?  
 Are you polite and pleasant to others?  
 Do you help in a youth group or a care home?  
 This could be for YOU

**KS 4 COURSES**  
 GCSEs  
 Food Technology  
 Sociology, Psychology  
 Vocational Options  
 Child Care  
 Customer Care  
 Health and Social Care  
 Hospitality and Catering  
 Retail Skills, Public Services  
 Hairdressing and Beauty Therapy

**POSSIBLE PROGRESSION AT AGE 16**  
 Vocational Courses  
 Beauty Therapy  
 Childcare and Education  
 Customer Service  
 Hairdressing  
 Health and Social Care  
 Hospitality and Catering  
 Public Services, Retail  
 Work Based Learning including  
 Apprenticeship

**PROGRESSION AFTER 18 INCLUDING UNIVERSITY**  
 Beauty Therapist  
 Care Worker  
 Chef  
 Classroom Assistant  
 Conference Manager  
 Counsellor, Hairdresser  
 Nurse, Police  
 Shop manager, Teacher,  
 Social Worker



## Collaborative provision

Wednesday whole day courses available for students taking the Welsh Baccalaureate in year 10

Pathway	Course	Equivalence	Location
Engineering and Construction	Level 2 Principal Learning in Engineering	5 GCSEs A*-C	Yale College
Engineering and Construction	Level 2 Principal Learning in Construction and the Built Environment	5 GCSEs A*-C	Yale College
Services to People	Level 1 Principal Learning in Hair and Beauty Studies	3 GCSEs D-G	Yale College
Services to People	Level 2 Principal Learning in Hair and Beauty Studies	5 GCSEs A*-C	Yale College

Wednesday afternoon half day courses

Creative Arts and Media	Extended Certificate in Performing Arts	2 GCSEs A*-C	Yale College
Engineering & Construction	Level 1 Certificate in Engineering	1 GCSE D-G	Yale College
Engineering & Construction	Level 1 Certificate in Basic Construction Skills	1 GCSE D-G	Yale College
Land Based	Extended Certificate in Animal Care	2 GCSEs A*-C	St. Christopher's School
Services to People	Level 1 NVQ Certificate in Customer Service	2 GCSEs D-G	Yale College
Services to People	Extended Certificate in Public Services	2 GCSEs A*-C	Yale College
Services to People	Extended Certificate in Hospitality (inc. Catering)	2 GCSEs A*-C	Yale College
Services to People	Level 1 Certificate in an Introduction to the Hair and Beauty Sector	2 GCSEs D-G	Yale College & St. Christopher's School

Able Students programme

Business and Finance	GCSE Law	1 GCSE	Yale College
Engineering	GCSE Electronics	1 GCSE	Yale College
Business and Finance	GCSE Economics	1 GCSE	Yale College
Science and Mathematics	GCSE Psychology	1 GCSE	Yale College
IT and Computing	GCSE Computing and Level 2 Award in Interactive Media	1½ GCSE A*-C	Yale College

Twilight courses (4:30-6:30): There will be a separate process for these courses in May

Languages	GCSE Spanish	1 GCSE	Yale College
Languages	GCSE German	1 GCSE	Yale College

## General Information about Collaborative Courses

Full-day and Half-day collaborative courses commencing for Year 10 in September 2012 will take place on a Wednesday, either for a full day or for the afternoon only.

In your own school you are aware of the high expectations your school has of you. In the same way, on collaborative courses you are expected to have an excellent level of attendance, work hard and behave responsibly and appropriately. Your school is informed each week of your attendance and receives regular information on your progress.

### Course Equipment

Students are expected to provide specific equipment appropriate to the course and this varies according to the course being studied. In Law, for example, the student will need to purchase a text book. In Construction and Engineering special clothing is needed to meet Health and Safety requirements.

Each course leaflet outlines the specific equipment required and the likely cost. Any difficulties with providing such equipment should be taken up with the student's own school.

### Course Offer

All courses have a maximum number of places. This is due to teaching space capacity or health & safety requirements. The places available are divided up between the schools according to the numbers of students in the year group in each school. Surplus school places are then offered to other schools. Students applying for all courses will be interviewed by the school or college providing the course.

The provision is supported by direct funding from the Welsh Assembly Government, as well as by Wrexham CBC, High Schools and local partners. Courses offered will only take place if there is sufficient interest in the courses and funding is available.

### Transport

For the afternoon courses students will be transported to course providers at the start of each teaching session. Courses will finish at 4.20pm and students and their parents/guardians must make arrangements for transport home.

Where courses take place beyond the town centre, for example at Bersham Road and in Wrexham schools, students will be returned to the King Street bus station or the Grove Park campus of Yale, if required.

For the full-day courses individual arrangements are made for each student.

For the Twilight Language courses Students must make their own transport arrangements. These courses take place at the Grove Park Campus of Yale College.

## Able Students Programme

Students who are expected to achieve A\*, A or B at GCSE are invited to join this programme, which is offered at Yale College. Students will study 2 GCSEs chosen from Law, Psychology and Economics. The subjects will be studied over 2 years with exams in year 11.

Alternatively able students who are interested in careers in computing, software design or games design may take a two year programme leading to a GCSE in Computing and a BTEC Certificate in Interactive Media. A new course on offer this year is GCSE Electronics. This will be offered with additional practical studies in Electronics. Currently there is a shortage of students wishing to take these subjects in Higher Education.

The Able Students Programme is designed to provide additional challenge for appropriate students. The students will gain additional qualifications and further insight into possible choices at A-level. Students who successfully complete this programme have an improved background when applying to the most competitive universities; however students who do not meet the criteria could disadvantage themselves if they underperform on this course.

On completing the Able Students' Programme the vast majority of students progress on to A-levels. Many students take one of the subjects studied in the able students Programme at A-Level.



## Curriculum Enrichment

In addition to the courses already described in this booklet, the Wrexham 14 - 19 Network provides "Curriculum Enrichment". Pupils may be recommended by their school to benefit from this provision.

The Wrexham 14 -19 Network "Curriculum Enrichment" is a range of courses which provide opportunities for students aged 14 -19. Support, transport and progression routes have been built in to meet individual student needs and Learning Pathways.

In the first year most students follow courses at Entry Level and may then have the opportunity to progress on to Level 1 courses or if appropriate to study another Entry Level course in a different vocational field. Most courses are one day a week although half day courses are also available. The courses can take place any day from Monday to Friday.

Courses offered include:

<b>Catering</b>	Level 1 in Hospitality - City & Guilds	Yale
<b>Catering</b>	Award in Hospitality - Edexcel - Btec	Yale
<b>Mechanics</b>	Award in Vehicle Systems Maintenance - City & Guilds	Wrexham Training
<b>Engineering</b>	Award in Engineering - Edexcel - Btec	Yale
<b>Construction</b>	Certificate in Basic Construction Skills - City & Guilds	Yale
<b>Animal Care</b>	Award in Work Based Animal Care - NPTC C&G	Llysfasi
<b>Animal Care</b>	Award in Animal Care - Agored	Llysfasi
<b>Outdoor Pursuits</b>	Introduction to Outdoor Pursuits - AQA	Nantyr Centre
<b>Welding &amp; Fabrication</b>	Award in Engineering - ABC	Llysfasi
<b>Active Sport &amp; Leisure</b>	Award in Sport & Active Leisure - Edexcel - Btec	Deeside
<b>Retail</b>	Certificate in Retail Skills - City & Guilds	St Christopher's
<b>Hairdressing</b>	Certificate in Hairdressing & Barbering - City & Guilds	Wrexham Training
<b>Beauty</b>	Certificate in the Hair & Beauty Sector - VTCT	St Christopher's
<b>Hairdressing</b>	Certificate in the Hair & Beauty Sector - VTCT	St Christopher's
<b>Landbased</b>	Award in Conservation - ABC	Llysfasi
<b>Horticulture</b>	Award in Practical Horticulture Skills - NPTC C&G	Deeside
<b>Engineering</b>	Introduction to Vehicle Maintenance - Agored	Deeside
<b>Environmental Studies</b>	Introduction to Basic Conservation - Agored	Eco Centre
<b>Pre Vocational Tasters</b>	Introduction to College - Agored	Deeside & Yale
<b>Childcare</b>	Certificate in Child Care - WJEC	St Christopher's
<b>3D Crafts</b>	Award in 3D Crafts - Edexcel - Btec	Yale
<b>Equestrian</b>	Equestrian Studies - Agored	Deeside
<b>Hard Landscape</b>	Award in Practical Horticulture Skills - NPTC C&G	Deeside



## What do I do now?

Consider your possible Learning Pathways and discuss them with teachers, parents and advisers. Your choice of courses may come from one or more Learning Pathways.

Read the information provided by your school about the subjects available.

Read the information sheet about collaborative courses you are interested in. These are available in your school.

Attend your school advice/parents evenings and, if you are considering a collaborative course listed on page 15, the collaborative advice evenings.

- 7th February - 5.00 - 7.00pm at Yale College Grove Park Campus (All courses except Engineering and Construction)
- 9th February - 5.00 - 7.00pm at Yale College Bersham Road Campus (Engineering and Construction courses)

Make your choices at school for all the courses

You can only choose one full-day or half-day collaborative course as they all take place at the same time.

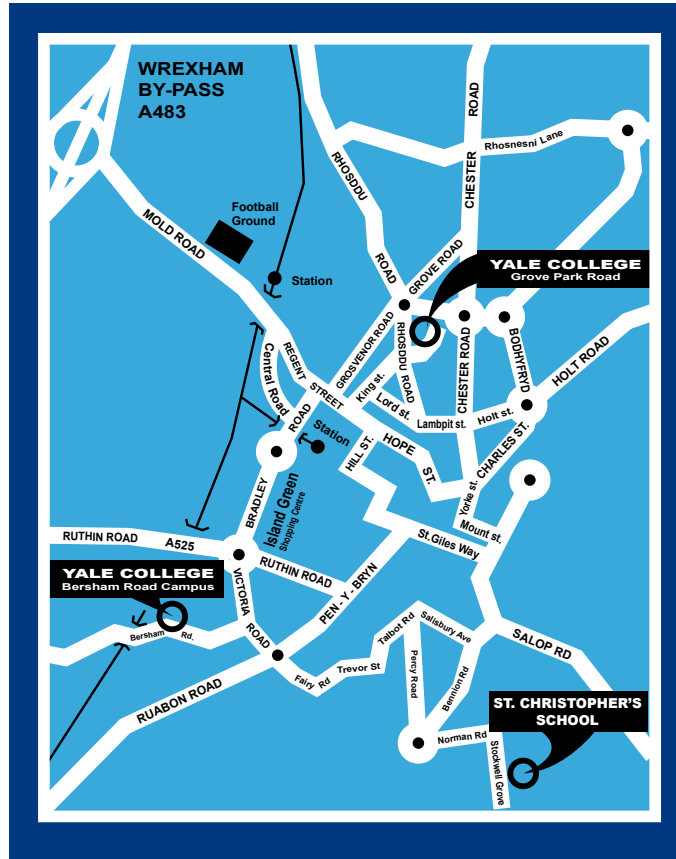
There are twilight courses in GCSE, German and Spanish. You can choose one of these. Enrolment for these courses will take place in May.



**YALE COLLEGE**  
 Grove Park Road,  
 Wrexham LL12 7AB  
 01978 311794

**YALE COLLEGE CENTRE FOR  
 ENGINEERING AND CONSTRUCTION**  
 Bersham Road, Wrexham LL13 7UH

**ST CHRISTOPHER'S**  
 Stockwell Grove, Wrexham LL13 7BW  
 01978 346910



This publication was produced by the Wrexham 14-19 network in partnership with local schools

The information contained in this publication was deemed to be correct at the time of going to press, though the Wrexham 14-19 Network and the schools reserve the right to change where necessary.

